

Datasheet for ABIN950659

**anti-BHLHE40 antibody (N-Term)**[Go to Product page](#)**1** Image

## Overview

Quantity:	0.4 mL
Target:	BHLHE40
Binding Specificity:	AA 29-59, N-Term
Reactivity:	Human, Mouse
Host:	Rabbit
Clonality:	Polyclonal
Conjugate:	This BHLHE40 antibody is un-conjugated
Application:	Western Blotting (WB), Enzyme Immunoassay (EIA)

## Product Details

Immunogen:	KLH conjugated synthetic peptide between 29-59 amino acids from the N-terminal region of human BHLHE40
Isotype:	Ig Fraction
Specificity:	This antibody reacts to BHLHB2.
Cross-Reactivity (Details):	Species reactivity (tested): Human and Mouse.
Purification:	Affinity chromatography on Protein A

## Target Details

Target:	BHLHE40
Alternative Name:	BHLHB2 / BHLHE40 ( <a href="#">BHLHE40 Products</a> )

## Target Details

Background: BHLHE40 encodes a basic helix-loop-helix protein expressed in various tissues. Expression in the chondrocytes is responsive to the addition of Bt2cAMP. The encoded protein is believed to be involved in the control of cell differentiation. Synonyms: Class B basic helix-loop-helix protein 2, Class E basic helix-loop-helix protein 40, DEC1, Differentially expressed in chondrocytes protein 1, Enhancer-of-split and hairy-related protein 2, SHARP-2, SHARP2, STRA13, Stimulated by retinoic acid gene 13 protein

Gene ID: 8553

NCBI Accession: [NP\\_003661](#)

Pathways: [Photoperiodism](#)

## Application Details

Application Notes: Optimal working dilution should be determined by the investigator.

Restrictions: For Research Use only

## Handling

Format: Liquid

Concentration: 0.25 mg/mL

Buffer: PBS containing 0.09 % (W/V) sodium azide as preservative

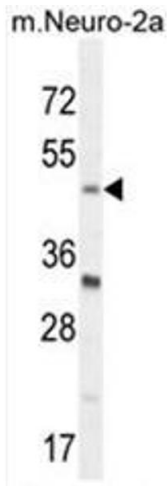
Preservative: Sodium azide

Precaution of Use: This product contains sodium azide: a POISONOUS AND HAZARDOUS SUBSTANCE which should be handled by trained staff only.

Handling Advice: Avoid repeated freezing and thawing.

Storage: 4 °C/-20 °C

Storage Comment: Store the antibody undiluted at 2-8 °C for one month or (in aliquots) at -20 °C for longer.



Western Blotting

**Image 1.** BHLHE40 Antibody (N-term) western blot analysis in mouse Neuro-2a cell line lysates (35µg/lane). This demonstrates the BHLHE40 antibody detected the BHLHE40 protein (arrow).