

Datasheet for ABIN950665  
**anti-BPGM antibody (C-Term)**[Go to Product page](#)

## 2 Images

## Overview

Quantity:	0.4 mL
Target:	BPGM
Binding Specificity:	AA 229-259, C-Term
Reactivity:	Human
Host:	Rabbit
Clonality:	Polyclonal
Application:	Western Blotting (WB), Enzyme Immunoassay (EIA)

## Product Details

Immunogen:	KLH conjugated synthetic peptide between 229-259 amino acids from the C-terminal region of human BPGM
Isotype:	Ig Fraction
Specificity:	This antibody reacts to Bisphosphoglycerate mutase.
Cross-Reactivity (Details):	Species reactivity (tested):Human.
Purification:	Affinity chromatography on Protein A

## Target Details

Target:	BPGM
Alternative Name:	Bisphosphoglycerate Mutase ( <a href="#">BPGM Products</a> )
Background:	2,3-diphosphoglycerate (2,3-DPG) is a small molecule found at high concentrations in red blood

## Target Details

cells where it binds to and decreases the oxygen affinity of hemoglobin. This gene encodes a multifunctional enzyme that catalyzes 2,3-DPG synthesis via its synthetase activity, and 2,3-DPG degradation via its phosphatase activity. The enzyme also has phosphoglycerate phosphomutase activity. Deficiency of this enzyme increases the affinity of cells for oxygen. Mutations in this gene result in hemolytic anemia. Multiple alternatively spliced variants, encoding the same protein, have been identified. Synonyms: 2, 3-bisphosphoglycerate mutase, 3-bisphosphoglycerate synthase, BPG-dependent PGAM, BPGM, erythrocyte

Gene ID: 669

NCBI Accession: [NP\\_001715](#)

## Application Details

Application Notes: Optimal working dilution should be determined by the investigator.

Restrictions: For Research Use only

## Handling

Format: Liquid

Concentration: 0.25 mg/mL

Buffer: PBS containing 0.09 % (W/V) sodium azide as preservative

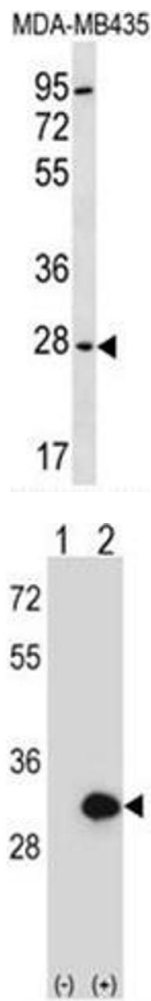
Preservative: Sodium azide

Precaution of Use: This product contains sodium azide: a POISONOUS AND HAZARDOUS SUBSTANCE which should be handled by trained staff only.

Handling Advice: Avoid repeated freezing and thawing.

Storage: 4 °C/-20 °C

Storage Comment: Store the antibody undiluted at 2-8 °C for one month or (in aliquots) at -20 °C for longer.



Western Blotting

**Image 1.** BPGM Antibody (C-term) western blot analysis in MDA-MB435 cell line lysates (35µg/lane). This demonstrates the BPGM antibody detected the BPGM protein (arrow).

Western Blotting

**Image 2.** Western blot analysis of BPGM (arrow) using rabbit polyclonal BPGM Antibody (C-term) . 293 cell lysates (2 µg/lane) either nontransfected (Lane 1) or transiently transfected (Lane 2) with the BPGM gene.