



[Go to Product page](#)

Datasheet for ABIN950666  
**anti-GDF6 antibody (N-Term)**

3 Images

Overview

Quantity:	0.4 mL
Target:	GDF6
Binding Specificity:	AA 38-67, N-Term
Reactivity:	Human, Mouse
Host:	Rabbit
Clonality:	Polyclonal
Conjugate:	This GDF6 antibody is un-conjugated
Application:	Western Blotting (WB), Flow Cytometry (FACS), Immunohistochemistry (Paraffin-embedded Sections) (IHC (p)), Enzyme Immunoassay (EIA)

Product Details

Immunogen:	KLH conjugated synthetic peptide between 38-67 amino acids from the N-terminal region of Human GDF6 / BMP13
Isotype:	Ig Fraction
Specificity:	This antibody recognizes Human and Mouse BMP13 / GDF6 (N-term).
Purification:	Saturated Ammonium Sulfate (SAS) precipitation followed by dialysis against PBS

Target Details

Target:	GDF6
Alternative Name:	BMP13 / GDF6 ( <a href="#">GDF6 Products</a> )

## Target Details

---

**Background:** This gene encodes a member of the bone morphogenetic protein (BMP) family and the TGF-beta superfamily of secreted signaling molecules. It is required for normal formation of some bones and joints in the limbs, skull, and axial skeleton. Mutations in this gene result in colobomata, which are congenital abnormalities in ocular development, and in Klippel-Feil syndrome (KFS), which is a congenital disorder of spinal segmentation. Synonyms: Bone Morphogenetic Protein 13, CDMP2, Cartilage Derived Morphogenetic Protein 2, GDF-16, GDF-6, GDF16

**Molecular Weight:** 50662 Da

**Gene ID:** 392255

**NCBI Accession:** [NP\\_001001557](#)

## Application Details

---

**Application Notes:** Optimal working dilution should be determined by the investigator.

**Restrictions:** For Research Use only

## Handling

---

**Format:** Liquid

**Concentration:** 0.25 mg/mL

**Buffer:** PBS containing 0.09 % (W/V) Sodium Azide as preservative

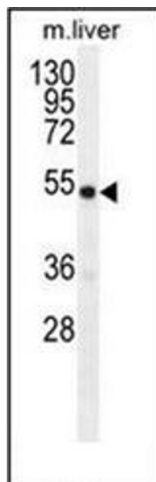
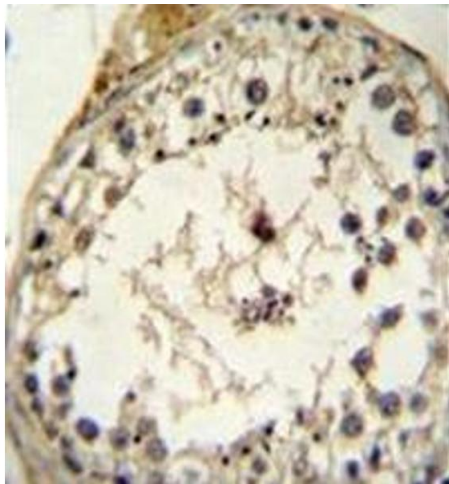
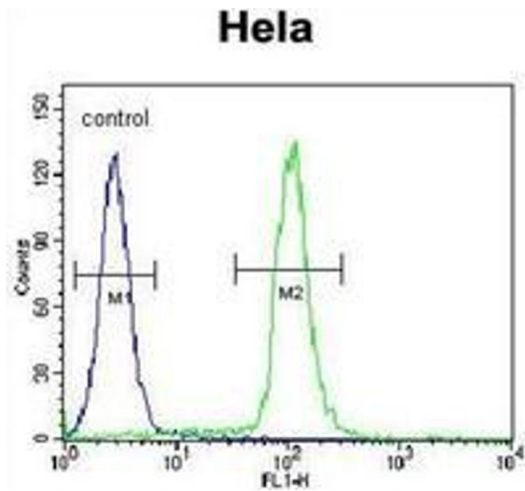
**Preservative:** Sodium azide

**Precaution of Use:** This product contains sodium azide: a POISONOUS AND HAZARDOUS SUBSTANCE which should be handled by trained staff only.

**Handling Advice:** Avoid repeated freezing and thawing.

**Storage:** 4 °C/-20 °C

**Storage Comment:** Store undiluted at 2-8 °C for one month or (in aliquots) at -20 °C for longer.



### Flow Cytometry

**Image 1.** Flow cytometric analysis of HeLa cells using BMP13 / GDF6 Antibody (N-term) Cat.-No AP51812PU-N (right histogram) compared to a negative control cell (left histogram). FITC-conjugated goat-anti-rabbit secondary antibodies were used for the analysis.

### Immunohistochemistry (Paraffin-embedded Sections)

**Image 2.** Immunohistochemistry analysis in formalin fixed and paraffin embedded human testis tissue reacted with BMP13 / GDF6 Antibody (N-term) followed by peroxidase conjugation of the secondary antibody and DAB staining.

### Western Blotting

**Image 3.** Western blot analysis of BMP13 / GDF6 Antibody (N-term) in mouse liver tissue lysates (35ug/lane). This demonstrates the GDF6 antibody detected the GDF6 protein (arrow).