



[Go to Product page](#)

Datasheet for ABIN950684  
**anti-BTBD17 antibody (C-Term)**

2 Images

Overview

Quantity:	0.4 mL
Target:	BTBD17
Binding Specificity:	AA 418-448, C-Term
Reactivity:	Mouse, Human
Host:	Rabbit
Clonality:	Polyclonal
Conjugate:	This BTBD17 antibody is un-conjugated
Application:	Western Blotting (WB), Immunohistochemistry (Paraffin-embedded Sections) (IHC (p)), Enzyme Immunoassay (EIA)

Product Details

Immunogen:	KLH conjugated synthetic peptide between 418-448 amino acids from the C-terminal region of human BTBD17
Isotype:	Ig Fraction
Specificity:	This antibody reacts to BTBD17.
Cross-Reactivity (Details):	Species reactivity (tested):Mouse.
Purification:	Affinity chromatography on Protein A

Target Details

Target:	BTBD17
---------	--------

## Target Details

Alternative Name:	BTBD17 ( <a href="#">BTBD17 Products</a> )
Background:	Synonyms: BTB/POZ domain-containing protein 17
Gene ID:	388419
NCBI Accession:	<a href="#">NP_001073935</a>

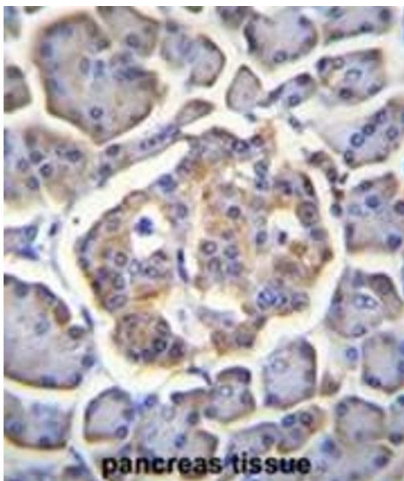
## Application Details

Application Notes:	Optimal working dilution should be determined by the investigator.
Restrictions:	For Research Use only

## Handling

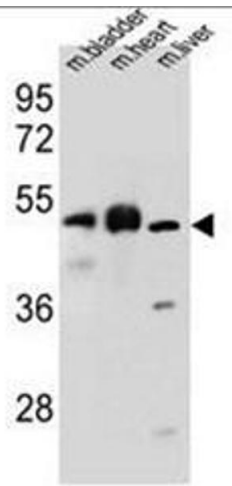
Format:	Liquid
Concentration:	0.25 mg/mL
Buffer:	PBS containing 0.09 % (W/V) sodium azide as preservative
Preservative:	Sodium azide
Precaution of Use:	This product contains sodium azide: a POISONOUS AND HAZARDOUS SUBSTANCE which should be handled by trained staff only.
Handling Advice:	Avoid repeated freezing and thawing.
Storage:	4 °C/-20 °C
Storage Comment:	Store the antibody undiluted at 2-8 °C for one month or (in aliquots) at -20 °C for longer.

## Images



### Immunohistochemistry (Paraffin-embedded Sections)

**Image 1.** BTBD17 Antibody (C-term) immunohistochemistry analysis in formalin fixed and paraffin embedded human pancreas tissue followed by peroxidase conjugation of the secondary antibody and DAB staining. This data demonstrates the use of BTBD17 Antibody (C-term) for immunohistochemistry. Clinical relevance has not been evaluated.



### Western Blotting

**Image 2.** BTBD17 Antibody (C-term) western blot analysis in mouse bladder, heart, liver tissue lysates (35µg/lane). This demonstrates the BTBD17 antibody detected the BTBD17 protein (arrow).