



[Go to Product page](#)

Datasheet for ABIN950692  
**anti-BTNL3 antibody (C-Term)**

2 Images

Overview

Quantity:	0.4 mL
Target:	BTNL3
Binding Specificity:	AA 430-459, C-Term
Reactivity:	Human
Host:	Rabbit
Clonality:	Polyclonal
Application:	Western Blotting (WB), Flow Cytometry (FACS), Enzyme Immunoassay (EIA)

Product Details

Immunogen:	KLH conjugated synthetic peptide between 430-459 amino acids from the C-terminal region of human BTNL3
Isotype:	Ig Fraction
Specificity:	This antibody reacts to BTNL3.
Cross-Reactivity (Details):	Species reactivity (tested):Human.
Purification:	Affinity chromatography on Protein A

Target Details

Target:	BTNL3
Alternative Name:	BTNL3 ( <a href="#">BTNL3 Products</a> )
Background:	BTNL3 is expressed in small intestine, colon, testis, spleen, and leukocyte and plays a role in

## Target Details

lipid metabolism. Two isoforms have been described.Synonyms: BTNLR, Butyrophilin-like protein 3, Butyrophilin-like receptor, COLF4100

Gene ID: 10917

NCBI Accession: [NP\\_932079](#)

## Application Details

Application Notes: Optimal working dilution should be determined by the investigator.

Restrictions: For Research Use only

## Handling

Format: Liquid

Concentration: 0.25 mg/mL

Buffer: PBS containing 0.09 % (W/V) sodium azide as preservative

Preservative: Sodium azide

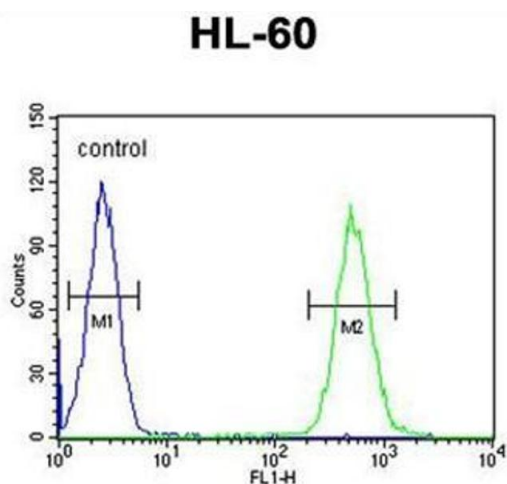
Precaution of Use: This product contains sodium azide: a POISONOUS AND HAZARDOUS SUBSTANCE which should be handled by trained staff only.

Handling Advice: Avoid repeated freezing and thawing.

Storage: 4 °C/-20 °C

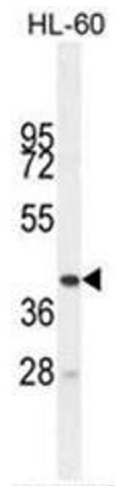
Storage Comment: Store the antibody undiluted at 2-8 °C for one month or (in aliquots) at -20 °C for longer.

## Images



### Flow Cytometry

**Image 1.** BTNL3 Antibody (C-term) flow cytometric analysis of HL-60 cells (right histogram) compared to a negative control cell (left histogram).FITC-conjugated goat-anti-rabbit secondary antibodies were used for the analysis.



### Western Blotting

**Image 2.** BTNL3 Antibody (C-term) western blot analysis in HL-60 cell line lysates (35µg/lane). This demonstrates the BTNL3 antibody detected the BTNL3 protein (arrow).