



[Go to Product page](#)

Datasheet for ABIN950693

## anti-BUD13 antibody (C-Term)

### 4 Images

#### Overview

Quantity:	0.4 mL
Target:	BUD13
Binding Specificity:	AA 465-494, C-Term
Reactivity:	Human, Mouse
Host:	Rabbit
Clonality:	Polyclonal
Conjugate:	This BUD13 antibody is un-conjugated
Application:	Western Blotting (WB), Flow Cytometry (FACS), Immunohistochemistry (Paraffin-embedded Sections) (IHC (p)), Enzyme Immunoassay (EIA)

#### Product Details

Immunogen:	KLH conjugated synthetic peptide between 465-494 amino acids from the C-terminal region of human BUD13
Isotype:	Ig Fraction
Specificity:	This antibody reacts to BUD13.
Cross-Reactivity (Details):	Species reactivity (tested):Human.
Purification:	Affinity chromatography on Protein A

#### Target Details

Target:	BUD13
---------	-------

## Target Details

Alternative Name: BUD13 ([BUD13 Products](#))

Background: Synonyms: homolog

Gene ID: 84811

NCBI Accession: [NP\\_001153208](#)

## Application Details

Application Notes: Optimal working dilution should be determined by the investigator.

Restrictions: For Research Use only

## Handling

Format: Liquid

Concentration: 0.25 mg/mL

Buffer: PBS containing 0.09 % (W/V) sodium azide as preservative

Preservative: Sodium azide

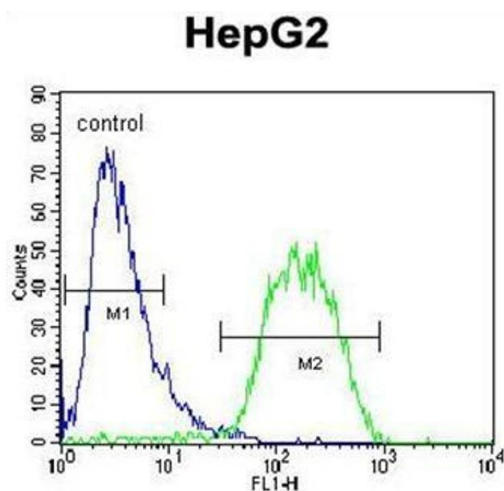
Precaution of Use: This product contains sodium azide: a POISONOUS AND HAZARDOUS SUBSTANCE which should be handled by trained staff only.

Handling Advice: Avoid repeated freezing and thawing.

Storage: 4 °C/-20 °C

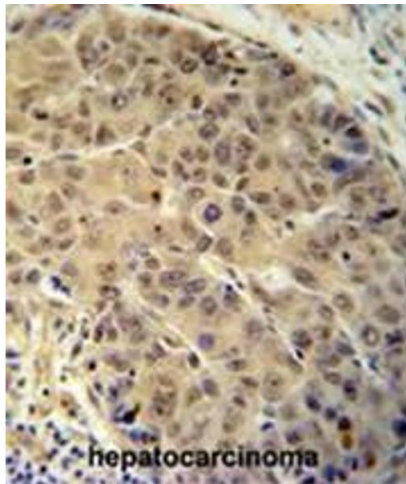
Storage Comment: Store the antibody undiluted at 2-8 °C for one month or (in aliquots) at -20 °C for longer.

## Images



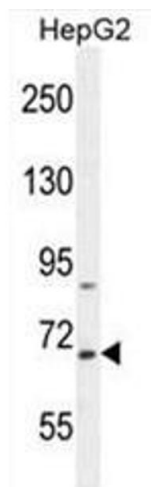
### Flow Cytometry

**Image 1.** BUD13 Antibody (C-term) flow cytometric analysis of HepG2 cells (right histogram) compared to a negative control cell (left histogram). FITC-conjugated goat-anti-rabbit secondary antibodies were used for the analysis.



### Immunohistochemistry (Paraffin-embedded Sections)

**Image 2.** BUD13 antibody (C-term) immunohistochemistry analysis in formalin fixed and paraffin embedded human hepatocarcinoma followed by peroxidase conjugation of the secondary antibody and DAB staining. This data demonstrates the use of the BUD13 antibody (C-term) for immunohistochemistry. Clinical relevance has not been evaluated.



### Western Blotting

**Image 3.** BUD13 Antibody (C-term) western blot analysis in HepG2 cell line lysates (35µg/lane). This demonstrates the BUD13 antibody detected the BUD13 protein (arrow).

Please check the [product details page](#) for more images. Overall 4 images are available for ABIN950693.