

Datasheet for ABIN950710  
**anti-CJ057 antibody (C-Term)**



[Go to Product page](#)

2 Images

### Overview

Quantity:	0.4 mL
Target:	CJ057 (C100RF57)
Binding Specificity:	AA 105-123, C-Term
Reactivity:	Human
Host:	Rabbit
Clonality:	Polyclonal
Conjugate:	This CJ057 antibody is un-conjugated
Application:	Western Blotting (WB), Immunohistochemistry (Paraffin-embedded Sections) (IHC (p)), Enzyme Immunoassay (EIA)

### Product Details

Immunogen:	KLH conjugated synthetic peptide between 105-123 amino acids from the C-terminal region of human CJ057
Isotype:	Ig Fraction
Specificity:	This antibody reacts to CJ057.
Cross-Reactivity (Details):	Species reactivity (tested):Human.
Purification:	Affinity chromatography on Protein A

### Target Details

Target:	CJ057 (C100RF57)
---------	------------------

## Target Details

---

Alternative Name:	C10orf57 ( <a href="#">C10ORF57 Products</a> )
Background:	Synonyms: Transmembrane protein C10orf57
Molecular Weight:	14243 Da
Gene ID:	80195
NCBI Accession:	<a href="#">NP_079401</a>

## Application Details

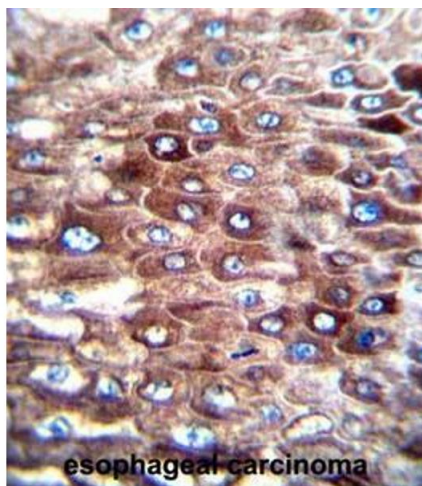
---

Application Notes:	Optimal working dilution should be determined by the investigator.
Restrictions:	For Research Use only

## Handling

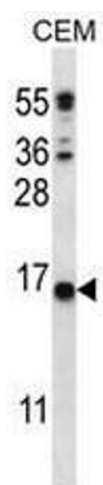
---

Format:	Liquid
Concentration:	0.25 mg/mL
Buffer:	PBS, 0.09 % (W/V) sodium azide
Preservative:	Sodium azide
Precaution of Use:	This product contains sodium azide: a POISONOUS AND HAZARDOUS SUBSTANCE which should be handled by trained staff only.
Handling Advice:	Avoid repeated freezing and thawing.
Storage:	4 °C/-20 °C
Storage Comment:	Store undiluted at 2-8 °C for one month or (in aliquots) at -20 °C for longer.



### Immunohistochemistry (Paraffin-embedded Sections)

**Image 1.** CJ057 Antibody (C-term) immunohistochemistry analysis in formalin fixed and paraffin embedded human esophageal carcinoma followed by peroxidase conjugation of the secondary antibody and DAB staining. This data demonstrates the use of CJ057 Antibody (C-term) for immunohistochemistry. Clinical relevance has not been evaluated.



### Western Blotting

**Image 2.** CJ057 Antibody (C-term) western blot analysis in CEM cell line lysates (35µg/lane). This demonstrates the CJ057 antibody detected the CJ057 protein (arrow).