

Datasheet for ABIN950712
anti-SFR1 antibody (N-Term)

2 Images

[Go to Product page](#)

Overview

Quantity:	0.4 mL
Target:	SFR1
Binding Specificity:	AA 1-30, N-Term
Reactivity:	Human
Host:	Rabbit
Clonality:	Polyclonal
Application:	Western Blotting (WB), Enzyme Immunoassay (EIA)

Product Details

Immunogen:	KLH conjugated synthetic peptide between 1-30 amino acids from the N-terminal region of human C10orf78
Isotype:	Ig Fraction
Specificity:	This antibody reacts to C10orf78.
Cross-Reactivity (Details):	Species reactivity (tested):Human.
Purification:	Affinity chromatography on Protein A

Target Details

Target:	SFR1
Alternative Name:	C10orf78 (SFR1 Products)
Background:	Synonyms: Uncharacterized protein

Target Details

Gene ID:	119392
NCBI Accession:	NP_001002759

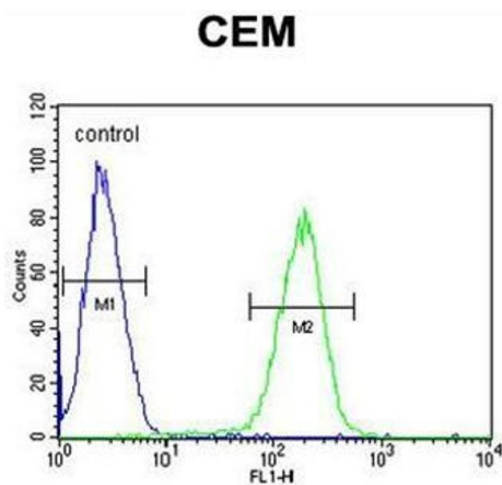
Application Details

Application Notes:	Optimal working dilution should be determined by the investigator.
Restrictions:	For Research Use only

Handling

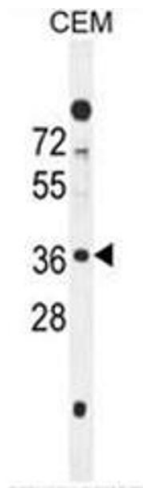
Format:	Liquid
Concentration:	0.25 mg/mL
Buffer:	PBS containing 0.09 % (W/V) sodium azide as preservative
Preservative:	Sodium azide
Precaution of Use:	This product contains sodium azide: a POISONOUS AND HAZARDOUS SUBSTANCE which should be handled by trained staff only.
Handling Advice:	Avoid repeated freezing and thawing.
Storage:	4 °C/-20 °C
Storage Comment:	Store the antibody undiluted at 2-8 °C for one month or (in aliquots) at -20 °C for longer.

Images



Flow Cytometry

Image 1. C10orf78 Antibody (N-term) flow cytometric analysis of CEM cells (right histogram) compared to a negative control cell (left histogram). FITC-conjugated goat-anti-rabbit secondary antibodies were used for the analysis.



Western Blotting

Image 2. C10orf78 Antibody (N-term) western blot analysis in CEM cell line lysates (35µg/lane). This demonstrates the C10orf78 antibody detected the C10orf78 protein (arrow).