

Datasheet for ABIN950716
**anti-Testis Expressed 40 (TEX40) (AA 171-200), (C-Term)
antibody**



[Go to Product page](#)

1 Image

Overview

Quantity:	0.4 mL
Target:	Testis Expressed 40 (TEX40)
Binding Specificity:	AA 171-200, C-Term
Reactivity:	Human
Host:	Rabbit
Clonality:	Polyclonal
Application:	Western Blotting (WB), Enzyme Immunoassay (EIA)

Product Details

Immunogen:	KLH conjugated synthetic peptide between 171-200 amino acids from the C-terminal region of human C11orf20
Isotype:	Ig Fraction
Specificity:	This antibody reacts to C11orf20.
Cross-Reactivity (Details):	Species reactivity (tested):Human.
Purification:	Affinity chromatography on Protein A

Target Details

Target:	Testis Expressed 40 (TEX40)
Alternative Name:	C11orf20 (TEX40 Products)
Background:	C11orf20 may be involved in late spermatogenesis (By similarity.)Synonyms: Uncharacterized

Target Details

	protein
Gene ID:	25858
NCBI Accession:	NP_001034585

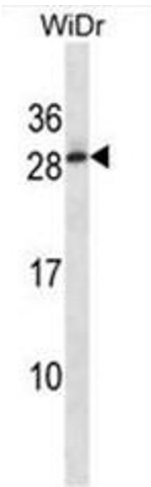
Application Details

Application Notes:	Optimal working dilution should be determined by the investigator.
Restrictions:	For Research Use only

Handling

Format:	Liquid
Concentration:	0.25 mg/mL
Buffer:	PBS containing 0.09 % (W/V) sodium azide as preservative
Preservative:	Sodium azide
Precaution of Use:	This product contains sodium azide: a POISONOUS AND HAZARDOUS SUBSTANCE which should be handled by trained staff only.
Handling Advice:	Avoid repeated freezing and thawing.
Storage:	4 °C/-20 °C
Storage Comment:	Store the antibody undiluted at 2-8 °C for one month or (in aliquots) at -20 °C for longer.

Images



Western Blotting

Image 1. C11orf20 Antibody (C-term) western blot analysis in WiDr cell line lysates (35µg/lane). This demonstrates the C11orf20 antibody detected the C11orf20 protein (arrow).