

Datasheet for ABIN950718

**anti-C11orf46 antibody (C-Term)**[Go to Product page](#)**1** Image

## Overview

Quantity:	0.4 mL
Target:	C11orf46
Binding Specificity:	AA 235-265, C-Term
Reactivity:	Human
Host:	Rabbit
Clonality:	Polyclonal
Conjugate:	This C11orf46 antibody is un-conjugated
Application:	Western Blotting (WB), Enzyme Immunoassay (EIA)

## Product Details

Immunogen:	KLH conjugated synthetic peptide between 235-265 amino acids from the C-terminal region of human C11orf46
Isotype:	Ig Fraction
Specificity:	This antibody reacts to C11orf46.
Cross-Reactivity (Details):	Species reactivity (tested):Human.
Purification:	Affinity chromatography on Protein A

## Target Details

Target:	C11orf46
Alternative Name:	C11orf46 ( <a href="#">C11orf46 Products</a> )

Target Details

Background:	Synonyms: Uncharacterized protein C11orf46
Gene ID:	120534
NCBI Accession:	<a href="#">NP_689529</a>

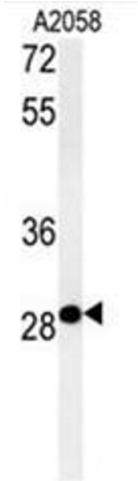
Application Details

Application Notes:	Optimal working dilution should be determined by the investigator.
Restrictions:	For Research Use only

Handling

Format:	Liquid
Concentration:	0.25 mg/mL
Buffer:	PBS containing 0.09 % (W/V) sodium azide as preservative
Preservative:	Sodium azide
Precaution of Use:	This product contains sodium azide: a POISONOUS AND HAZARDOUS SUBSTANCE which should be handled by trained staff only.
Handling Advice:	Avoid repeated freezing and thawing.
Storage:	4 °C/-20 °C
Storage Comment:	Store the antibody undiluted at 2-8 °C for one month or (in aliquots) at -20 °C for longer.

Images



**Western Blotting**

**Image 1.** C11orf46 Antibody (C-term) western blot analysis in A2058 cell line lysates (35µg/lane). This demonstrates the C11orf46 antibody detected the C11orf46 protein (arrow).