



Datasheet for ABIN950721  
**anti-C11orf53 antibody (C-Term)**



[Go to Product page](#)

3 Images

Overview

Quantity:	0.4 mL
Target:	C11orf53
Binding Specificity:	AA 190-219, C-Term
Reactivity:	Human
Host:	Rabbit
Clonality:	Polyclonal
Conjugate:	This C11orf53 antibody is un-conjugated
Application:	Western Blotting (WB), Enzyme Immunoassay (EIA)

Product Details

Immunogen:	KLH conjugated synthetic peptide between 190-219 amino acids from the C-terminal region of human C11orf53
Isotype:	Ig Fraction
Specificity:	This antibody reacts to C11orf53.
Cross-Reactivity (Details):	Species reactivity (tested):Human.
Purification:	Affinity chromatography on Protein A

Target Details

Target:	C11orf53
Alternative Name:	C11orf53 ( <a href="#">C11orf53 Products</a> )

## Target Details

Background: Synonyms: Uncharacterized protein C11orf53

Gene ID: 341032

NCBI Accession: [NP\\_940900](#)

## Application Details

Application Notes: Optimal working dilution should be determined by the investigator.

Restrictions: For Research Use only

## Handling

Format: Liquid

Concentration: 0.25 mg/mL

Buffer: PBS containing 0.09 % (W/V) sodium azide as preservative

Preservative: Sodium azide

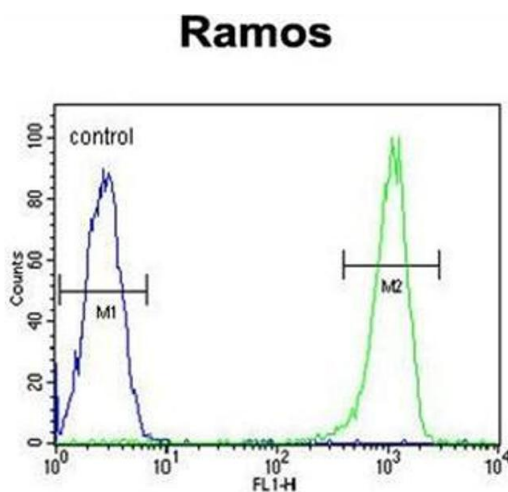
Precaution of Use: This product contains sodium azide: a POISONOUS AND HAZARDOUS SUBSTANCE which should be handled by trained staff only.

Handling Advice: Avoid repeated freezing and thawing.

Storage: 4 °C/-20 °C

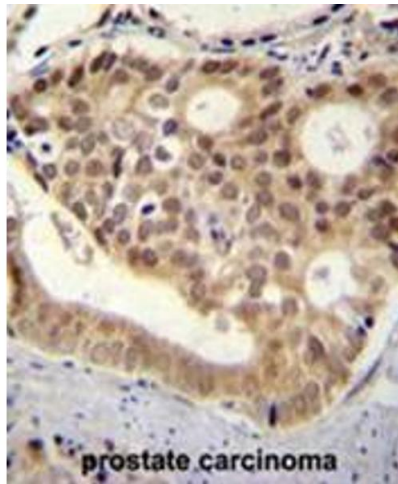
Storage Comment: Store the antibody undiluted at 2-8 °C for one month or (in aliquots) at -20 °C for longer.

## Images



### Flow Cytometry

**Image 1.** C11orf53 Antibody (C-term) flow cytometric analysis of Ramos cells (right histogram) compared to a negative control cell (left histogram). FITC-conjugated goat-anti-rabbit secondary antibodies were used for the analysis.



### Immunohistochemistry (Paraffin-embedded Sections)

**Image 2.** C11orf53 antibody (C-term) immunohistochemistry analysis in formalin fixed and paraffin embedded human pancreas tissue followed by peroxidase conjugation of the secondary antibody and DAB staining. This data demonstrates the use of C11orf53 antibody (C-term) for immunohistochemistry. Clinical relevance has not been evaluated.



### Western Blotting

**Image 3.** C11orf53 Antibody (C-term) western blot analysis in Ramos cell line lysates (35µg/lane). This demonstrates the C11orf53 antibody detected the C11orf53 protein (arrow).