

Datasheet for ABIN950729
anti-C11ORF74 antibody (C-Term)

2 Images

[Go to Product page](#)

Overview

Quantity:	0.4 mL
Target:	C11ORF74
Binding Specificity:	AA 197-228, C-Term
Reactivity:	Human
Host:	Rabbit
Clonality:	Polyclonal
Conjugate:	This C11ORF74 antibody is un-conjugated
Application:	Western Blotting (WB), Enzyme Immunoassay (EIA)

Product Details

Immunogen:	KLH conjugated synthetic peptide between 197-228 amino acids from the C-terminal region of human C11orf74
Isotype:	Ig Fraction
Specificity:	This antibody reacts to C11orf74.
Cross-Reactivity (Details):	Species reactivity (tested):Human.
Purification:	Affinity chromatography on Protein A

Target Details

Target:	C11ORF74
Alternative Name:	C11orf74 (C11ORF74 Products)

Target Details

Background:	The exact function of C11orf74 remains unknown.Synonyms: Protein HEPIS, Uncharacterized protein C11orf74
Gene ID:	119710
NCBI Accession:	NP_620142

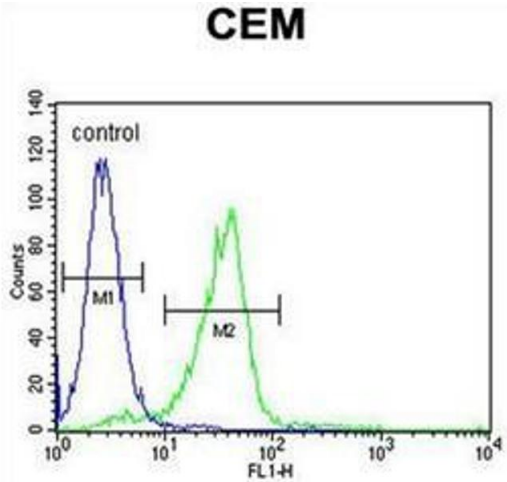
Application Details

Application Notes:	Optimal working dilution should be determined by the investigator.
Restrictions:	For Research Use only

Handling

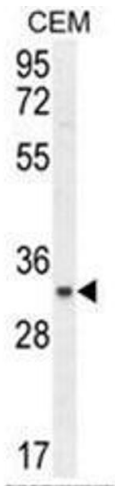
Format:	Liquid
Concentration:	0.25 mg/mL
Buffer:	PBS containing 0.09 % (W/V) sodium azide as preservative
Preservative:	Sodium azide
Precaution of Use:	This product contains sodium azide: a POISONOUS AND HAZARDOUS SUBSTANCE which should be handled by trained staff only.
Handling Advice:	Avoid repeated freezing and thawing.
Storage:	4 °C/-20 °C
Storage Comment:	Store the antibody undiluted at 2-8 °C for one month or (in aliquots) at -20 °C for longer.

Images



Flow Cytometry

Image 1. C11orf74 Antibody (C-term) flow cytometric analysis of CEM cells (right histogram) compared to a negative control cell (left histogram).FITC-conjugated goat-anti-rabbit secondary antibodies were used for the analysis.



Western Blotting

Image 2. C11orf74 Antibody (C-term) western blot analysis in CEM cell line lysates (35µg/lane). This demonstrates the C11orf74 antibody detected the C11orf74 protein (arrow).