



[Go to Product page](#)

Datasheet for ABIN950760

## anti-C15orf27 antibody (C-Term)

### 3 Images

#### Overview

Quantity:	0.4 mL
Target:	C15orf27
Binding Specificity:	AA 506-535, C-Term
Reactivity:	Human, Mouse
Host:	Rabbit
Clonality:	Polyclonal
Conjugate:	This C15orf27 antibody is un-conjugated
Application:	Western Blotting (WB), Immunohistochemistry (Paraffin-embedded Sections) (IHC (p)), Enzyme Immunoassay (EIA)

#### Product Details

Immunogen:	KLH conjugated synthetic peptide between 506-535 amino acids from the C-terminal region of human C0027
Isotype:	Ig Fraction
Specificity:	This antibody reacts to C0027.
Cross-Reactivity (Details):	Species reactivity (tested): Human and Mouse.
Purification:	Affinity chromatography on Protein A

#### Target Details

Target:	C15orf27
---------	----------

## Target Details

---

Alternative Name:	C15orf27 ( <a href="#">C15orf27 Products</a> )
Background:	Synonyms: Transmembrane protein C15orf27
Molecular Weight:	58444 Da
Gene ID:	123591
NCBI Accession:	<a href="#">NP_689548</a>

## Application Details

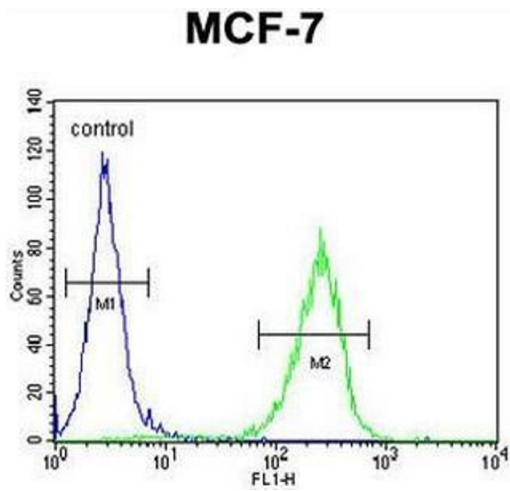
---

Application Notes:	Optimal working dilution should be determined by the investigator.
Restrictions:	For Research Use only

## Handling

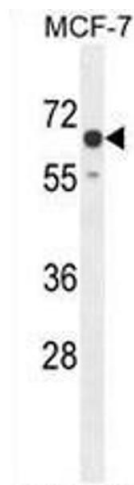
---

Format:	Liquid
Concentration:	0.25 mg/mL
Buffer:	PBS, 0.09 % (W/V) sodium azide
Preservative:	Sodium azide
Precaution of Use:	This product contains sodium azide: a POISONOUS AND HAZARDOUS SUBSTANCE which should be handled by trained staff only.
Handling Advice:	Avoid repeated freezing and thawing.
Storage:	4 °C/-20 °C
Storage Comment:	Store undiluted at 2-8 °C for one month or (in aliquots) at -20 °C for longer.



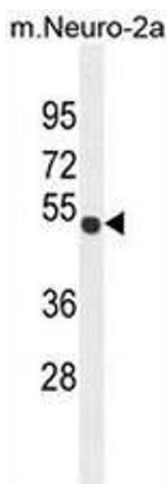
### Flow Cytometry

**Image 1.** CO027 Antibody (C-term) flow cytometric analysis of MCF-7 cells (right histogram) compared to a negative control cell (left histogram). FITC-conjugated goat-anti-rabbit secondary antibodies were used for the analysis.



### Western Blotting

**Image 2.** CO027 Antibody (C-term) western blot analysis in MCF-7 cell line lysates (35µg/lane). This demonstrates the CO027 antibody detected the CO027 protein (arrow).



### Western Blotting

**Image 3.** CO027 Antibody (C-term) western blot analysis in mouse Neuro-2a cell line lysates (35µg/lane). This demonstrates the CO027 antibody detected the CO027 protein (arrow).