



Datasheet for ABIN950766
anti-BC052040 antibody (Middle Region)



[Go to Product page](#)

2 Images

Overview

Quantity:	0.4 mL
Target:	BC052040
Binding Specificity:	AA 170-197, Middle Region
Reactivity:	Human, Mouse
Host:	Rabbit
Clonality:	Polyclonal
Conjugate:	This BC052040 antibody is un-conjugated
Application:	Western Blotting (WB), Enzyme Immunoassay (EIA)

Product Details

Immunogen:	KLH conjugated synthetic peptide between 170-197 amino acids from the Central region of human C15orf41
Isotype:	Ig Fraction
Specificity:	This antibody reacts to C15orf41.
Cross-Reactivity (Details):	Species reactivity (tested):Human and Mouse.
Purification:	Affinity chromatography on Protein A

Target Details

Target:	BC052040
Alternative Name:	C15orf41 (BC052040 Products)

Target Details

Background: Synonyms: Uncharacterized protein

Gene ID: 84529

NCBI Accession: [NP_001123482](#)

Application Details

Application Notes: Optimal working dilution should be determined by the investigator.

Restrictions: For Research Use only

Handling

Format: Liquid

Concentration: 0.25 mg/mL

Buffer: PBS containing 0.09 % (W/V) sodium azide as preservative

Preservative: Sodium azide

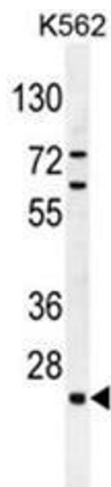
Precaution of Use: This product contains sodium azide: a POISONOUS AND HAZARDOUS SUBSTANCE which should be handled by trained staff only.

Handling Advice: Avoid repeated freezing and thawing.

Storage: 4 °C/-20 °C

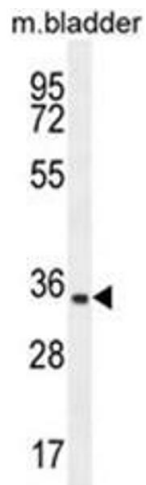
Storage Comment: Store the antibody undiluted at 2-8 °C for one month or (in aliquots) at -20 °C for longer.

Images



Western Blotting

Image 1. C15orf41 Antibody (Center) western blot analysis in K562 cell line lysates (35µg/lane). This demonstrates the C15orf41 antibody detected the C15orf41 protein (arrow).



Western Blotting

Image 2. C15orf41 Antibody (Center) western blot analysis in mouse bladder tissue lysates (35µg/lane). This demonstrates the C15orf41 antibody detected the C15orf41 protein (arrow).