



[Go to Product page](#)

Datasheet for ABIN950773

## anti-C16orf45 antibody (Middle Region)

### 2 Images

#### Overview

|                      |  |
|----------------------|--|
| Quantity:            | 0.4 mL   |
| Target:              | C16orf45   |
| Binding Specificity: | AA 89-119, Middle Region   |
| Reactivity:          | Human  |
| Host:                | Rabbit   |
| Clonality:           | Polyclonal   |
| Application:         | Western Blotting (WB), Immunohistochemistry (Paraffin-embedded Sections) (IHC (p)), Enzyme Immunoassay (EIA) |

#### Product Details

|               |  |
|---------------|--|
| Immunogen:    | KLH conjugated synthetic peptide between 89-119 amino acids from the Central region of Human CP045. Genename: C16orf45 |
| Isotype:      | Ig Fraction  |
| Specificity:  | This antibody recognizes Human CP045 (Center).   |
| Purification: | Affinity Chromatography on Protein A   |

#### Target Details

|                   |  |
|-------------------|--|
| Target:           | C16orf45                                       |
| Alternative Name: | C16orf45 ( <a href="#">C16orf45 Products</a> ) |
| Background:       | Synonyms: Uncharacterized protein C16orf45     |

## Target Details

---

|                   |                              |
|-------------------|------------------------------|
| Molecular Weight: | 23732 Da                     |
| Gene ID:          | 89927                        |
| NCBI Accession:   | <a href="#">NP_001135941</a> |

## Application Details

---

|                    |  |
|--------------------|--|
| Application Notes: | Optimal working dilution should be determined by the investigator. |
| Restrictions:      | For Research Use only  |

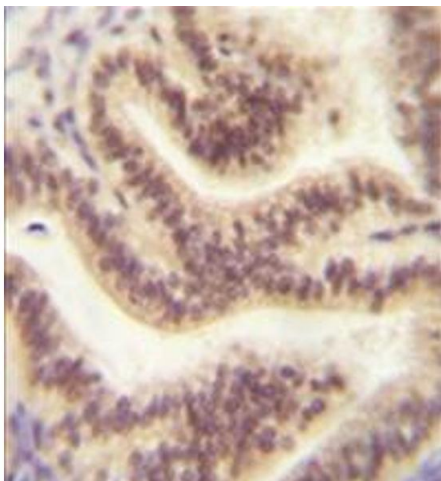
## Handling

---

|                    |  |
|--------------------|--|
| Format:            | Liquid   |
| Concentration:     | 0.25 mg/mL   |
| Buffer:            | PBS, 0.09 % Sodium Azide   |
| Preservative:      | Sodium azide   |
| Precaution of Use: | This product contains sodium azide: a POISONOUS AND HAZARDOUS SUBSTANCE which should be handled by trained staff only. |
| Handling Advice:   | Avoid repeated freezing and thawing.   |

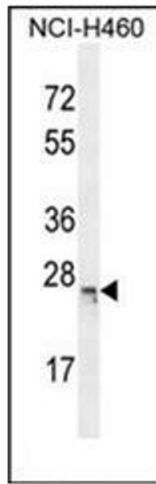
## Images

---



### Immunohistochemistry (Paraffin-embedded Sections)

**Image 1.** Formalin fixed, paraffin embedded human uterus tissue stained with C16orf45 Antibody (Center) followed by peroxidase conjugation of the secondary antibody and DAB staining. This data demonstrates the use of the CP045 antibody (Center) for immunohistochemistry. Clinical relevance has not been evaluated.



### Western Blotting

**Image 2.** Western blot analysis of C16orf45 Antibody (Center) in NCI-H460 cell line lysates (35ug/lane). This demonstrates the CP045 antibody detected the CP045 protein (arrow).