



Datasheet for ABIN950806
anti-C19orf26 antibody (Middle Region)



[Go to Product page](#)

2 Images

Overview

Quantity:	0.4 mL
Target:	C19orf26 (C19ORF26)
Binding Specificity:	AA 429-459, Middle Region
Reactivity:	Human
Host:	Rabbit
Clonality:	Polyclonal
Conjugate:	This C19orf26 antibody is un-conjugated
Application:	Western Blotting (WB), Flow Cytometry (FACS), Enzyme Immunoassay (EIA)

Product Details

Immunogen:	KLH conjugated synthetic peptide between 429~459 amino acids from the Center region of human C19orf26
Isotype:	Ig Fraction
Specificity:	This antibody reacts to C19orf26.
Cross-Reactivity (Details):	Species reactivity (tested):Human.
Purification:	Affinity chromatography on Protein A

Target Details

Target:	C19orf26 (C19ORF26)
Alternative Name:	C19orf26 (C19ORF26 Products)

Target Details

Background: Synonyms: DOS, Protein Dos

Gene ID: 255057

NCBI Accession: [NP_689982](#)

Application Details

Application Notes: Optimal working dilution should be determined by the investigator.

Restrictions: For Research Use only

Handling

Format: Liquid

Concentration: 0.25 mg/mL

Buffer: PBS containing 0.09 % (W/V) sodium azide as preservative

Preservative: Sodium azide

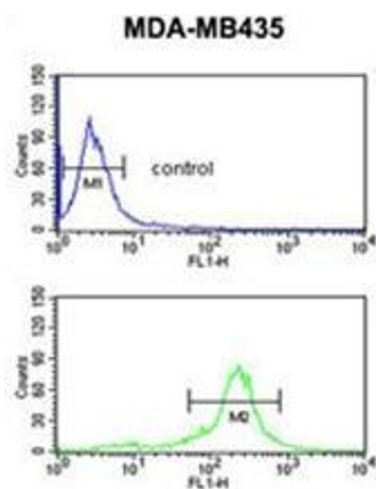
Precaution of Use: This product contains sodium azide: a POISONOUS AND HAZARDOUS SUBSTANCE which should be handled by trained staff only.

Handling Advice: Avoid repeated freezing and thawing.

Storage: 4 °C/-20 °C

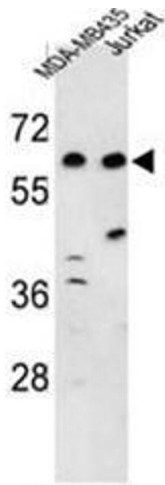
Storage Comment: Store the antibody undiluted at 2-8 °C for one month or (in aliquots) at -20 °C for longer.

Images



Flow Cytometry

Image 1. C19orf26 Antibody (Center) flow cytometric analysis of MDA-MB435 cells (bottom histogram) compared to a negative control cell (top histogram). FITC-conjugated goat-anti-rabbit secondary antibodies were used for the analysis.



Western Blotting

Image 2. Western blot analysis of C19orf26 Antibody (Center) in MDA-MB435, Jurkat cell line lysates (35µg/lane). C19orf26 (arrow) was detected using the purified Pab.