



Datasheet for ABIN950811
anti-C19orf50 antibody (Middle Region)



[Go to Product page](#)

3 Images

Overview

| | |
|----------------------|--|
| Quantity: | 0.4 mL |
| Target: | C19orf50 |
| Binding Specificity: | AA 66-95, Middle Region |
| Reactivity: | Human |
| Host: | Rabbit |
| Clonality: | Polyclonal |
| Application: | Western Blotting (WB), Immunohistochemistry (Paraffin-embedded Sections) (IHC (p)), Enzyme Immunoassay (EIA) |

Product Details

| | |
|-----------------------------|--|
| Immunogen: | KLH conjugated synthetic peptide between 66-95 amino acids from the Central region of human C19orf50 |
| Isotype: | Ig Fraction |
| Specificity: | This antibody reacts to C19orf50. |
| Cross-Reactivity (Details): | Species reactivity (tested):Human. |
| Purification: | Affinity chromatography on Protein A |

Target Details

| | |
|-------------------|--|
| Target: | C19orf50 |
| Alternative Name: | C19orf50 (C19orf50 Products) |

Target Details

Background: Synonyms: UPF0459 protein C19orf50

Gene ID: 79036

NCBI Accession: [NP_001165419](#)

Application Details

Application Notes: Optimal working dilution should be determined by the investigator.

Restrictions: For Research Use only

Handling

Format: Liquid

Concentration: 0.25 mg/mL

Buffer: PBS containing 0.09 % (W/V) sodium azide as preservative

Preservative: Sodium azide

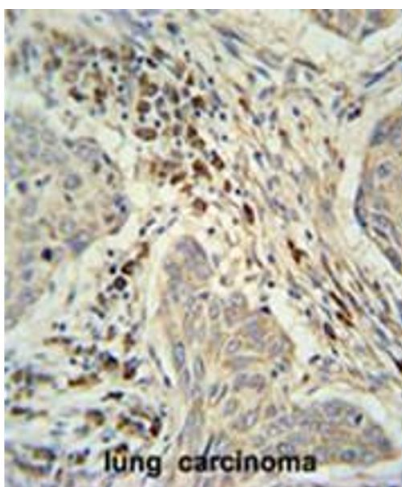
Precaution of Use: This product contains sodium azide: a POISONOUS AND HAZARDOUS SUBSTANCE which should be handled by trained staff only.

Handling Advice: Avoid repeated freezing and thawing.

Storage: 4 °C/-20 °C

Storage Comment: Store the antibody undiluted at 2-8 °C for one month or (in aliquots) at -20 °C for longer.

Images



Immunohistochemistry (Paraffin-embedded Sections)

Image 1. C19orf50 Antibody (Center) immunohistochemistry analysis in formalin fixed and paraffin embedded human lung carcinoma followed by peroxidase conjugation of the secondary antibody and DAB staining. This data demonstrates the use of the C19orf50 Antibody (Center) for immunohistochemistry. Clinical relevance has not been evaluated.



Western Blotting

Image 2. C19orf50 Antibody

Western Blotting

Image 3. Western blot analysis of C19orf50 (arrow) using rabbit polyclonal C19orf50 Antibody (Center) . 293 cell lysates (2 ug/lane) either nontransfected (Lane 1) or transiently transfected (Lane 2) with the C19orf50 gene.