

Datasheet for ABIN950858
anti-C1QL3 antibody (N-Term)



[Go to Product page](#)

1 Image

Overview

Quantity:	0.4 mL
Target:	C1QL3
Binding Specificity:	AA 29-57, N-Term
Reactivity:	Mouse, Human
Host:	Rabbit
Clonality:	Polyclonal
Conjugate:	This C1QL3 antibody is un-conjugated
Application:	Western Blotting (WB), Enzyme Immunoassay (EIA)

Product Details

Immunogen:	KLH conjugated synthetic peptide between 29-57 amino acids from the N-terminal region of human C1QL3
Isotype:	Ig Fraction
Specificity:	This antibody reacts to C1QL3.
Cross-Reactivity (Details):	Species reactivity (tested):Mouse.
Purification:	Affinity chromatography on Protein A

Target Details

Target:	C1QL3
Alternative Name:	C1QL3 (C1QL3 Products)

Target Details

Background:	May have S-adenosyl-L-methionine-dependent methyl-transferase activity (Potential).Synonyms: Complement C1q-like protein 3
Gene ID:	389941
NCBI Accession:	NP_001010908

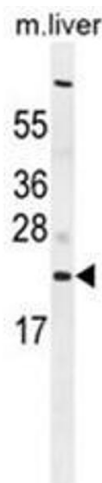
Application Details

Application Notes:	Optimal working dilution should be determined by the investigator.
Restrictions:	For Research Use only

Handling

Format:	Liquid
Concentration:	0.25 mg/mL
Buffer:	PBS containing 0.09 % (W/V) sodium azide as preservative
Preservative:	Sodium azide
Precaution of Use:	This product contains sodium azide: a POISONOUS AND HAZARDOUS SUBSTANCE which should be handled by trained staff only.
Handling Advice:	Avoid repeated freezing and thawing.
Storage:	4 °C/-20 °C
Storage Comment:	Store the antibody undiluted at 2-8 °C for one month or (in aliquots) at -20 °C for longer.

Images



Western Blotting

Image 1. C1QL3 Antibody (N-term) western blot analysis in mouse liver tissue lysates (35µg/lane). This demonstrates the C1QL3 antibody detected the C1QL3 protein (arrow).