

Datasheet for ABIN950859
anti-C1QL4 antibody (N-Term)



[Go to Product page](#)

2 Images

Overview

Quantity:	0.4 mL
Target:	C1QL4
Binding Specificity:	AA 7-36, N-Term
Reactivity:	Human
Host:	Rabbit
Clonality:	Polyclonal
Conjugate:	This C1QL4 antibody is un-conjugated
Application:	Western Blotting (WB), Flow Cytometry (FACS), Enzyme Immunoassay (EIA)

Product Details

Immunogen:	KLH conjugated synthetic peptide between 7-36 amino acids from the N-terminal region of human C1QL4
Isotype:	Ig Fraction
Specificity:	This antibody reacts to C1QL4.
Cross-Reactivity (Details):	Species reactivity (tested):Human.
Purification:	Affinity chromatography on Protein A

Target Details

Target:	C1QL4
Alternative Name:	C1QL4 (C1QL4 Products)

Target Details

Background: Synonyms: Complement C1q-like protein 4

Gene ID: 338761

NCBI Accession: [NP_001008224](#)

Application Details

Application Notes: Optimal working dilution should be determined by the investigator.

Restrictions: For Research Use only

Handling

Format: Liquid

Concentration: 0.25 mg/mL

Buffer: PBS containing 0.09 % (W/V) sodium azide as preservative

Preservative: Sodium azide

Precaution of Use: This product contains sodium azide: a POISONOUS AND HAZARDOUS SUBSTANCE which should be handled by trained staff only.

Handling Advice: Avoid repeated freezing and thawing.

Storage: 4 °C/-20 °C

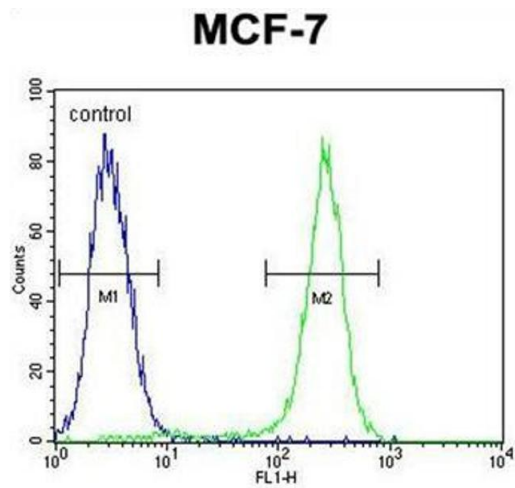
Storage Comment: Store the antibody undiluted at 2-8 °C for one month or (in aliquots) at -20 °C for longer.

Images



Western Blotting

Image 1. C1QL4 Antibody (N-term) western blot analysis in MCF-7 cell line lysates (35µg/lane). This demonstrates the C1QL4 antibody detected the C1QL4 protein (arrow).



Flow Cytometry

Image 2. C1QL4 Antibody (N-term) flow cytometric analysis of MCF-7 cells (right histogram) compared to a negative control cell (left histogram). FITC-conjugated goat-anti-rabbit secondary antibodies were used for the analysis.