

Datasheet for ABIN950862
anti-C1RL antibody (Middle Region)[Go to Product page](#)

1 Image

Overview

Quantity:	0.4 mL
Target:	C1RL
Binding Specificity:	AA 160-190, Middle Region
Reactivity:	Human
Host:	Rabbit
Clonality:	Polyclonal
Conjugate:	This C1RL antibody is un-conjugated
Application:	Western Blotting (WB), Enzyme Immunoassay (EIA)

Product Details

Immunogen:	KLH conjugated synthetic peptide between 160-190 amino acids from the Central region of human C1RL
Isotype:	Ig Fraction
Specificity:	This antibody reacts to C1RL.
Cross-Reactivity (Details):	Species reactivity (tested):Human.
Purification:	Affinity chromatography on Protein A

Target Details

Target:	C1RL
Alternative Name:	C1RL (C1RL Products)

Target Details

Background:	C1RL mediates the proteolytic cleavage of HP/haptoglobin in the endoplasmic reticulum.Synonyms: 1, CLSPA, Complement C1r subcomponent-like protein, P
Gene ID:	51279
NCBI Accession:	NP_057630

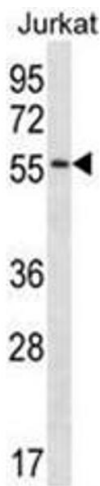
Application Details

Application Notes:	Optimal working dilution should be determined by the investigator.
Restrictions:	For Research Use only

Handling

Format:	Liquid
Concentration:	0.25 mg/mL
Buffer:	PBS containing 0.09 % (W/V) sodium azide as preservative
Preservative:	Sodium azide
Precaution of Use:	This product contains sodium azide: a POISONOUS AND HAZARDOUS SUBSTANCE which should be handled by trained staff only.
Handling Advice:	Avoid repeated freezing and thawing.

Images



Western Blotting

Image 1. C1RL Antibody (Center) western blot analysis in Jurkat cell line lysates (35µg/lane).This demonstrates the C1RL antibody detected the C1RL protein (arrow).