

Datasheet for ABIN950880  
**anti-TSPEAR antibody (Middle Region)**[Go to Product page](#)

## 3 Images

## Overview

Quantity:	0.4 mL
Target:	TSPEAR
Binding Specificity:	AA 299-329, Middle Region
Reactivity:	Human
Host:	Rabbit
Clonality:	Polyclonal
Conjugate:	This TSPEAR antibody is un-conjugated
Application:	Western Blotting (WB), Flow Cytometry (FACS), Immunohistochemistry (Paraffin-embedded Sections) (IHC (p)), Enzyme Immunoassay (EIA)

## Product Details

Immunogen:	KLH conjugated synthetic peptide between 299~329 amino acids from the Center region of human C21orf29
Isotype:	Ig Fraction
Specificity:	This antibody reacts to C21orf29.
Cross-Reactivity (Details):	Species reactivity (tested):Human.
Purification:	Affinity chromatography on Protein A

## Target Details

Target:	TSPEAR
---------	--------

## Target Details

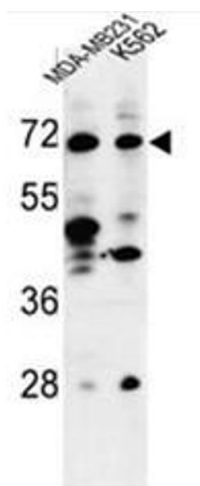
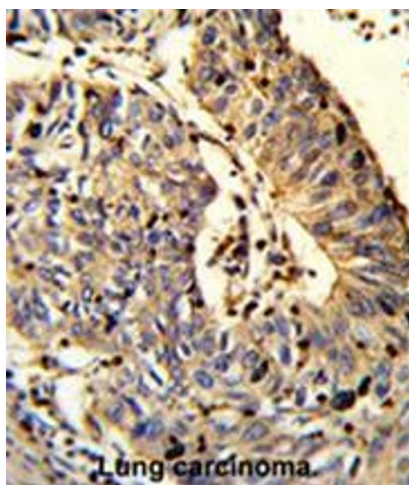
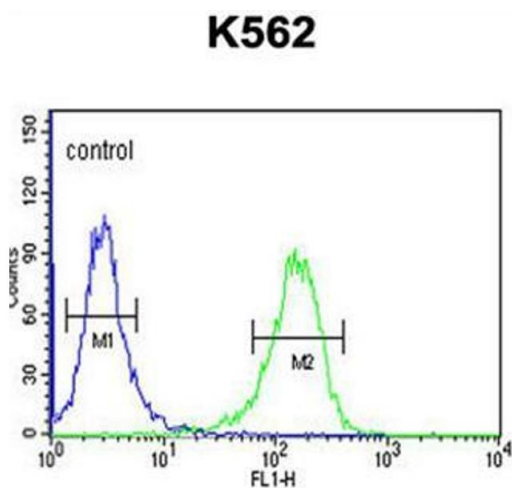
Alternative Name:	C21orf29 ( <a href="#">TSPEAR Products</a> )
Background:	Synonyms: Protein TSPEAR, TSP-EAR, TSPEAR
Gene ID:	54084
NCBI Accession:	<a href="#">NP_659428</a>
Pathways:	<a href="#">Sensory Perception of Sound</a>

## Application Details

Application Notes:	Optimal working dilution should be determined by the investigator.
Restrictions:	For Research Use only

## Handling

Format:	Liquid
Concentration:	0.25 mg/mL
Buffer:	PBS containing 0.09 % (W/V) sodium azide as preservative
Preservative:	Sodium azide
Precaution of Use:	This product contains sodium azide: a POISONOUS AND HAZARDOUS SUBSTANCE which should be handled by trained staff only.
Handling Advice:	Avoid repeated freezing and thawing.
Storage:	4 °C/-20 °C
Storage Comment:	Store the antibody undiluted at 2-8 °C for one month or (in aliquots) at -20 °C for longer.



### Flow Cytometry

**Image 1.** C21orf29 Antibody (Center) flow cytometric analysis of K562 cells (right histogram) compared to a negative control cell (left histogram). FITC-conjugated goat-anti-rabbit secondary antibodies were used for the analysis.

### Immunohistochemistry (Paraffin-embedded Sections)

**Image 2.** Formalin-fixed and paraffin-embedded human Lung carcinoma reacted with C21orf29 Antibody (Center), which was peroxidase-conjugated to the secondary antibody, followed by DAB staining. This data demonstrates the use of this antibody for immunohistochemistry; clinical relevance has not been evaluated.

### Western Blotting

**Image 3.** Western blot analysis of C21orf29 Antibody (Center) in MDA-MB231, K562 cell line lysates (35µg/lane). C21orf29 (arrow) was detected using the purified Pab.