

Datasheet for ABIN950912
anti-WDPCP antibody (C-Term)

2 Images

[Go to Product page](#)

Overview

Quantity:	0.4 mL
Target:	WDPCP
Binding Specificity:	AA 679-709, C-Term
Reactivity:	Human
Host:	Rabbit
Clonality:	Polyclonal
Conjugate:	This WDPCP antibody is un-conjugated
Application:	Western Blotting (WB), Immunohistochemistry (Paraffin-embedded Sections) (IHC (p)), Enzyme Immunoassay (EIA)

Product Details

Immunogen:	KLH conjugated synthetic peptide between 679-709 amino acids from the C-terminal region of human CB086
Isotype:	Ig Fraction
Specificity:	This antibody reacts to CB086.
Cross-Reactivity (Details):	Species reactivity (tested):Human.
Purification:	Affinity chromatography on Protein A

Target Details

Target:	WDPCP
---------	-------

Target Details

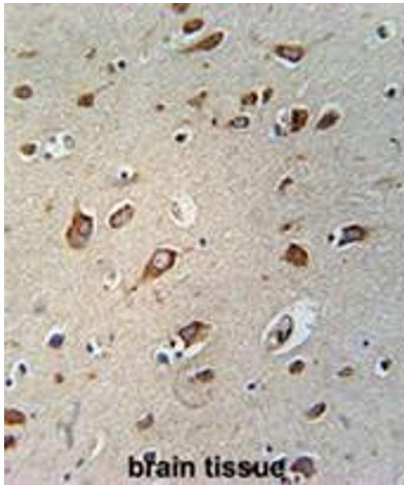
Alternative Name:	C2orf86 (WDPCP Products)
Background:	The C2ORF86 gene encodes an ortholog of Drosophila 'fritz,' a cytoplasmic WD40 repeat protein that controls planar cell polarity (summarized by Kim et al., 2010 [PubMed 20671153]).Synonyms: LOC51057, WD repeat-containing protein C2orf86
Molecular Weight:	85084 Da
Gene ID:	51057
NCBI Accession:	NP_056994

Application Details

Application Notes:	Optimal working dilution should be determined by the investigator.
Restrictions:	For Research Use only

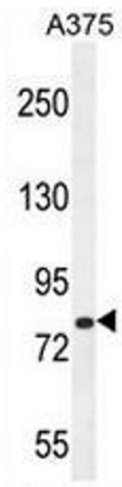
Handling

Format:	Liquid
Concentration:	0.25 mg/mL
Buffer:	PBS, 0.09 % (W/V) sodium azide
Preservative:	Sodium azide
Precaution of Use:	This product contains sodium azide: a POISONOUS AND HAZARDOUS SUBSTANCE which should be handled by trained staff only.
Handling Advice:	Avoid repeated freezing and thawing.
Storage:	4 °C/-20 °C
Storage Comment:	Store undiluted at 2-8 °C for one month or (in aliquots) at -20 °C for longer.



Immunohistochemistry (Paraffin-embedded Sections)

Image 1. CB086 Antibody (C-term) immunohistochemistry analysis in formalin fixed and paraffin embedded human brain tissue followed by peroxidase conjugation of the secondary antibody and DAB staining. This data demonstrates the use of the CB086 Antibody (C-term) for immunohistochemistry. Clinical relevance has not been evaluated.



Western Blotting

Image 2. CB086 Antibody (C-term) western blot analysis in A375 cell line lysates (35µg/lane). This demonstrates the CB086 antibody detected the CB086 protein (arrow).