

Datasheet for ABIN950920

**anti-C4BPB antibody (Middle Region)****2** Images[Go to Product page](#)

## Overview

Quantity:	0.4 mL
Target:	C4BPB
Binding Specificity:	AA 124-153, Middle Region
Reactivity:	Human
Host:	Rabbit
Clonality:	Polyclonal
Conjugate:	This C4BPB antibody is un-conjugated
Application:	Western Blotting (WB), Enzyme Immunoassay (EIA)

## Product Details

Immunogen:	KLH conjugated synthetic peptide between 124-153 amino acids from the Central region of human C4BPB
Isotype:	Ig Fraction
Specificity:	This antibody reacts to C4b-binding protein beta.
Cross-Reactivity (Details):	Species reactivity (tested):Human.
Purification:	Affinity chromatography on Protein A

## Target Details

Target:	C4BPB
Alternative Name:	C4b-Binding Protein beta ( <a href="#">C4BPB Products</a> )

## Target Details

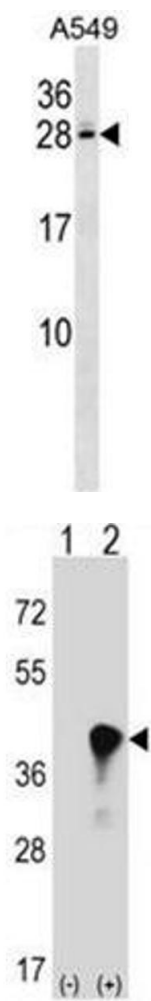
Background:	This gene encodes a member of a superfamily of proteins composed predominantly of tandemly arrayed short consensus repeats of approximately 60 amino acids. A single, unique beta-chain encoded by this gene assembles with seven identical alpha-chains into the predominant isoform of C4b-binding protein, a multimeric protein that controls activation of the complement cascade through the classical pathway. C4b-binding protein has a regulatory role in the coagulation system also, mediated through the beta-chain binding of protein S, a vitamin K-dependent protein that serves as a cofactor of activated protein C. The genes encoding both alpha and beta chains are located adjacent to each other on human chromosome 1 in the regulator of complement activation gene cluster. Alternative splicing gives rise to multiple transcript variants.Synonyms: C4BPB
Gene ID:	725
NCBI Accession:	<a href="#">NP_001017365</a>
Pathways:	<a href="#">Complement System</a>

## Application Details

Application Notes:	Optimal working dilution should be determined by the investigator.
Restrictions:	For Research Use only

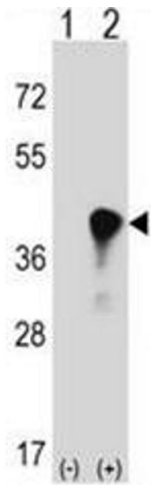
## Handling

Format:	Liquid
Concentration:	0.25 mg/mL
Buffer:	PBS containing 0.09 % (W/V) sodium azide as preservative
Preservative:	Sodium azide
Precaution of Use:	This product contains sodium azide: a POISONOUS AND HAZARDOUS SUBSTANCE which should be handled by trained staff only.
Handling Advice:	Avoid repeated freezing and thawing.
Storage:	4 °C/-20 °C
Storage Comment:	Store the antibody undiluted at 2-8 °C for one month or (in aliquots) at -20 °C for longer.



**Western Blotting**

**Image 1.** C4BPB Antibody (Center) western blot analysis in A549 cell line lysates (35µg/lane). This demonstrates the C4BPB antibody detected the C4BPB protein (arrow).



**Western Blotting**

**Image 2.** Western blot analysis of C4BPB (arrow) using rabbit polyclonal C4BPB Antibody (Center) . 293 cell lysates (2 ug/lane) either nontransfected (Lane 1) or transiently transfected (Lane 2) with the C4BPB gene.