



[Go to Product page](#)

Datasheet for ABIN950923

## anti-ZGRF1 antibody (N-Term)

### 4 Images

#### Overview

Quantity:	0.4 mL
Target:	ZGRF1
Binding Specificity:	AA 45-74, N-Term
Reactivity:	Human, Mouse
Host:	Rabbit
Clonality:	Polyclonal
Conjugate:	This ZGRF1 antibody is un-conjugated
Application:	Western Blotting (WB), Immunofluorescence (IF), Immunohistochemistry (Paraffin-embedded Sections) (IHC (p)), Enzyme Immunoassay (EIA)

#### Product Details

Immunogen:	KLH conjugated synthetic peptide between 45-74 amino acids from the N-terminal region of human C4orf21
Isotype:	Ig Fraction
Specificity:	This antibody reacts to C4orf21.
Cross-Reactivity (Details):	Species reactivity (tested):Human and Mouse.
Purification:	Affinity chromatography on Protein A

#### Target Details

Target:	ZGRF1
---------	-------

## Target Details

Alternative Name:	C4orf21 ( <a href="#">ZGRF1 Products</a> )
Background:	Synonyms: Uncharacterized protein
Gene ID:	55345
NCBI Accession:	<a href="#">NP_060862</a>

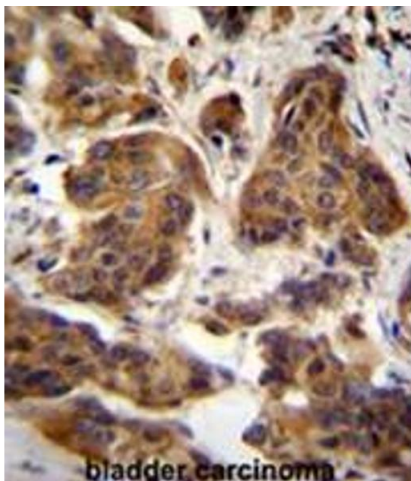
## Application Details

Application Notes:	Optimal working dilution should be determined by the investigator.
Restrictions:	For Research Use only

## Handling

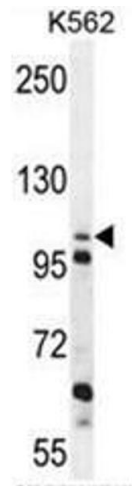
Format:	Liquid
Concentration:	0.25 mg/mL
Buffer:	PBS containing 0.09 % (W/V) sodium azide as preservative
Preservative:	Sodium azide
Precaution of Use:	This product contains sodium azide: a POISONOUS AND HAZARDOUS SUBSTANCE which should be handled by trained staff only.
Handling Advice:	Avoid repeated freezing and thawing.
Storage:	4 °C/-20 °C
Storage Comment:	Store the antibody undiluted at 2-8 °C for one month or (in aliquots) at -20 °C for longer.

## Images



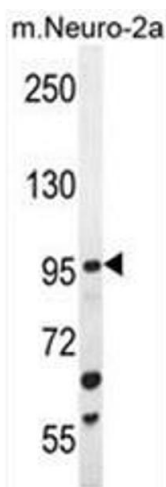
### Immunohistochemistry (Paraffin-embedded Sections)

**Image 1.** C4orf21 Antibody (N-term) immunohistochemistry analysis in formalin fixed and paraffin embedded human bladder carcinoma followed by peroxidase conjugation of the secondary antibody and DAB staining. This data demonstrates the use of C4orf21 Antibody (N-term) for immunohistochemistry. Clinical relevance has not been evaluated.



#### Western Blotting

**Image 2.** C4orf21 Antibody (N-term) western blot analysis in K562 cell line lysates (35µg/lane). This demonstrates the C4orf21 antibody detected the C4orf21 protein (arrow).



#### Western Blotting

**Image 3.** C4orf21 Antibody (N-term) western blot analysis in mouse Neuro-2a cell line lysates (35µg/lane). This demonstrates the C4orf21 antibody detected the C4orf21 protein (arrow).

Please check the [product details page](#) for more images. Overall 4 images are available for ABIN950923.