

Datasheet for ABIN950947
anti-C6orf150 antibody (Middle Region)[Go to Product page](#)

2 Images

Overview

Quantity:	0.4 mL
Target:	C6orf150
Binding Specificity:	AA 273-303, Middle Region
Reactivity:	Human
Host:	Rabbit
Clonality:	Polyclonal
Conjugate:	This C6orf150 antibody is un-conjugated
Application:	Western Blotting (WB), Enzyme Immunoassay (EIA)

Product Details

Immunogen:	KLH conjugated synthetic peptide between 273-303 amino acids from the Central region of human CF150
Isotype:	Ig Fraction
Specificity:	This antibody recognizes Human C6orf150 (CF150). Other species not tested.
Purification:	Affinity chromatography on Protein A

Target Details

Target:	C6orf150
Alternative Name:	C6orf150 (C6orf150 Products)
Background:	Function: Nucleotidyltransferase that catalyzes the formation of cyclic GMP-AMP (cGAMP)

Target Details

from ATP and GTP. Catalysis involves both the formation of a 2',5' phosphodiester linkage at the GpA step and the formation of a 3',5' phosphodiester linkage at the ApG step, producing c[G(2',5')pA(3',5')p]. Has antiviral activity by acting as a key cytosolic DNA sensor, the presence of double- stranded DNA (dsDNA) in the cytoplasm being a danger signal that triggers the immune responses. Binds cytosolic DNA directly, leading to activation and synthesis of cGAMP, a second messenger that binds to and activates TMEM173/STING, thereby triggering type-I interferon production. Cellular Location: Cytoplasm, cytosol. Tissue Location: Expressed in the monocytic cell line THP1. Synonyms: Uncharacterized protein C6orf150

Molecular Weight: 58814 Da

Gene ID: 115004

NCBI Accession: [NP_612450](#)

Pathways: [Activation of Innate immune Response](#)

Application Details

Application Notes: Optimal working dilution should be determined by the investigator.

Restrictions: For Research Use only

Handling

Format: Liquid

Concentration: 0.25 mg/mL

Buffer: PBS, 0.09 % (W/V) Sodium Azide

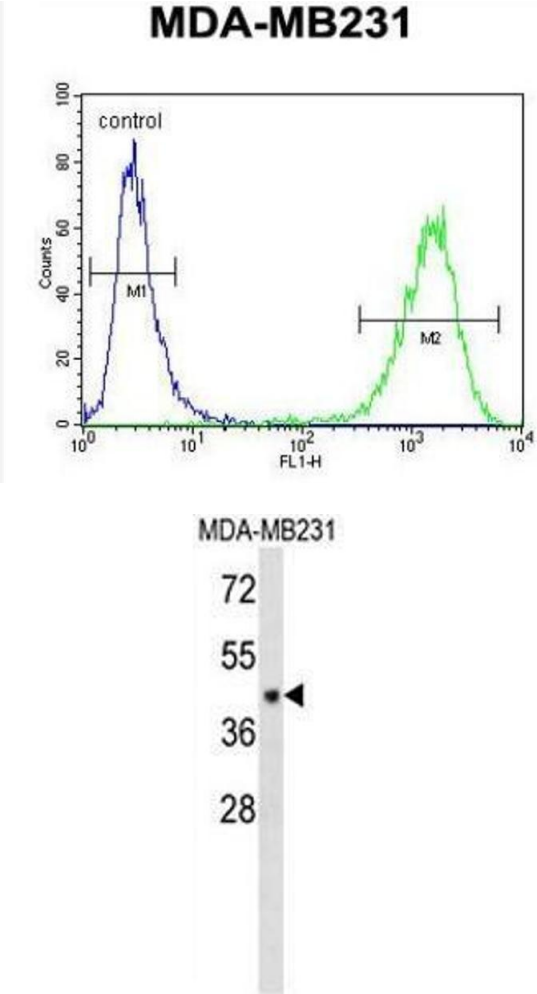
Preservative: Sodium azide

Precaution of Use: This product contains sodium azide: a POISONOUS AND HAZARDOUS SUBSTANCE which should be handled by trained staff only.

Handling Advice: Avoid repeated freezing and thawing.

Storage: 4 °C/-20 °C

Storage Comment: Store the antibody undiluted at 2-8 °C for one month or (in aliquots) at -20 °C for longer.



Flow Cytometry

Image 1. Flow Cytometric analysis of MDA-MB231 cells using CF150 Antibody (Center) Cat.-No AP50874PU-N (right histogram) compared to a negative control cell (left histogram). FITC-conjugated goat-anti-rabbit secondary antibodies were used for the analysis.

Western Blotting

Image 2. Western blot analysis in MDA-MB231 cell line lysates using CF150 Antibody (Center) Cat.-No AP50874PU-N (35µg/lane). This demonstrates the CF150 antibody detected the CF150 protein (arrow).