



[Go to Product page](#)

Datasheet for ABIN950954

anti-C6ORF211 antibody (N-Term)

1 Image

Overview

Quantity:	0.4 mL
Target:	C6ORF211
Binding Specificity:	AA 28-57, N-Term
Reactivity:	Human
Host:	Rabbit
Clonality:	Polyclonal
Application:	Western Blotting (WB), Enzyme Immunoassay (EIA)

Product Details

Immunogen:	KLH conjugated synthetic peptide between 28-57 amino acids from the N-terminal region of human C6orf211
Isotype:	Ig Fraction
Specificity:	This antibody reacts to C6orf211.
Cross-Reactivity (Details):	Species reactivity (tested):Human.
Purification:	Affinity chromatography on Protein A

Target Details

Target:	C6ORF211
Alternative Name:	C6orf211 (C6ORF211 Products)
Background:	Synonyms: UPF0364 protein C6orf211

Target Details

Gene ID: 79624

NCBI Accession: [NP_078849](#)

Application Details

Application Notes: Optimal working dilution should be determined by the investigator.

Restrictions: For Research Use only

Handling

Format: Liquid

Concentration: 0.25 mg/mL

Buffer: PBS containing 0.09 % (W/V) sodium azide as preservative

Preservative: Sodium azide

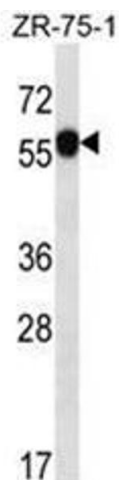
Precaution of Use: This product contains sodium azide: a POISONOUS AND HAZARDOUS SUBSTANCE which should be handled by trained staff only.

Handling Advice: Avoid repeated freezing and thawing.

Storage: 4 °C/-20 °C

Storage Comment: Store the antibody undiluted at 2-8 °C for one month or (in aliquots) at -20 °C for longer.

Images



Western Blotting

Image 1. C6orf211 Antibody (N-term) western blot analysis in ZR-75-1 cell line lysates (35µg/lane). This demonstrates the C6orf211 antibody detected the C6orf211 protein (arrow).