



Datasheet for ABIN950956
anti-C6ORF58 antibody (Middle Region)



[Go to Product page](#)

3 Images

Overview

Quantity:	0.4 mL
Target:	C6ORF58
Binding Specificity:	AA 212-241, Middle Region
Reactivity:	Human
Host:	Rabbit
Clonality:	Polyclonal
Application:	Western Blotting (WB), Flow Cytometry (FACS), Immunohistochemistry (Paraffin-embedded Sections) (IHC (p)), Enzyme Immunoassay (EIA)

Product Details

Immunogen:	KLH conjugated synthetic peptide between 212-241 amino acids from the Central region of human C6orf58
Isotype:	Ig Fraction
Specificity:	This antibody reacts to C6orf58.
Cross-Reactivity (Details):	Species reactivity (tested):Human.
Purification:	Affinity chromatography on Protein A

Target Details

Target:	C6ORF58
Alternative Name:	C6orf58 (C6ORF58 Products)

Target Details

Gene ID: 352999

NCBI Accession: [NP_001010905](#)

Application Details

Application Notes: Optimal working dilution should be determined by the investigator.

Restrictions: For Research Use only

Handling

Format: Liquid

Concentration: 0.25 mg/mL

Buffer: PBS containing 0.09 % (W/V) sodium azide as preservative

Preservative: Sodium azide

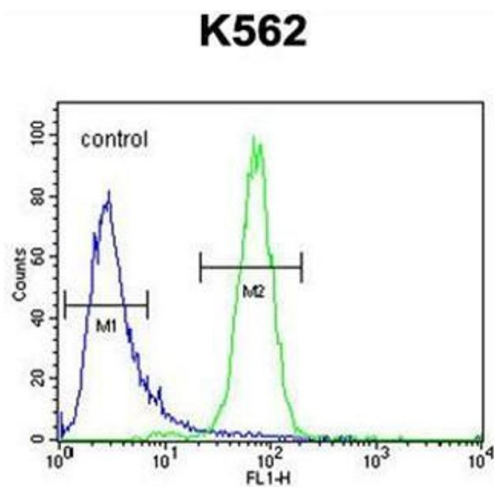
Precaution of Use: This product contains sodium azide: a POISONOUS AND HAZARDOUS SUBSTANCE which should be handled by trained staff only.

Handling Advice: Avoid repeated freezing and thawing.

Storage: 4 °C/-20 °C

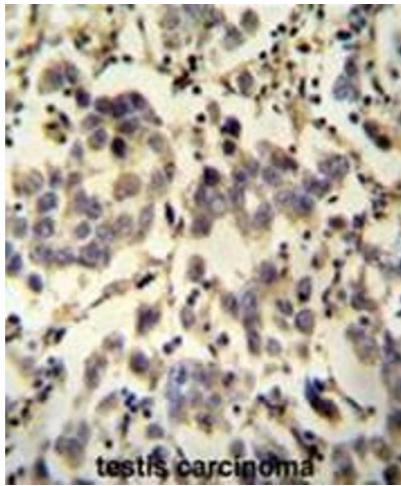
Storage Comment: Store the antibody undiluted at 2-8 °C for one month or (in aliquots) at -20 °C for longer.

Images



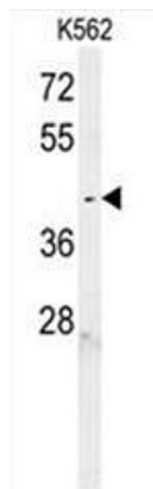
Flow Cytometry

Image 1. C6orf58 Antibody (Center) flow cytometric analysis of K562 cells (right histogram) compared to a negative control cell (left histogram). FITC-conjugated goat-anti-rabbit secondary antibodies were used for the analysis.



Immunohistochemistry (Paraffin-embedded Sections)

Image 2. C6orf58 antibody (Center) immunohistochemistry analysis in formalin fixed and paraffin embedded human testis carcinoma followed by peroxidase conjugation of the secondary antibody and DAB staining. This data demonstrates the use of the C6orf58 antibody (Center) for immunohistochemistry. Clinical relevance has not been evaluated.



Western Blotting

Image 3. C6orf58 Antibody (Center) western blot analysis in K562 cell line lysates (35µg/lane). This demonstrates the C6orf58 antibody detected the C6orf58 protein (arrow).