



[Go to Product page](#)

Datasheet for ABIN950958

anti-C6orf70 antibody (Middle Region)

3 Images

Overview

Quantity:	0.4 mL
Target:	C6orf70 (ERMARD)
Binding Specificity:	AA 346-375, Middle Region
Reactivity:	Human
Host:	Rabbit
Clonality:	Polyclonal
Conjugate:	This C6orf70 antibody is un-conjugated
Application:	Western Blotting (WB), Flow Cytometry (FACS), Immunohistochemistry (Paraffin-embedded Sections) (IHC (p)), Enzyme Immunoassay (EIA)

Product Details

Immunogen:	KLH conjugated synthetic peptide between 346-375 amino acids from the Central region of human C6orf70
Isotype:	Ig Fraction
Specificity:	This antibody reacts to C6orf70.
Cross-Reactivity (Details):	Species reactivity (tested):Human.
Purification:	Affinity chromatography on Protein A

Target Details

Target:	C6orf70 (ERMARD)
---------	------------------

Target Details

Alternative Name:	C6orf70 (ERMARD Products)
Background:	Synonyms: Transmembrane protein
Gene ID:	55780
NCBI Accession:	NP_060811

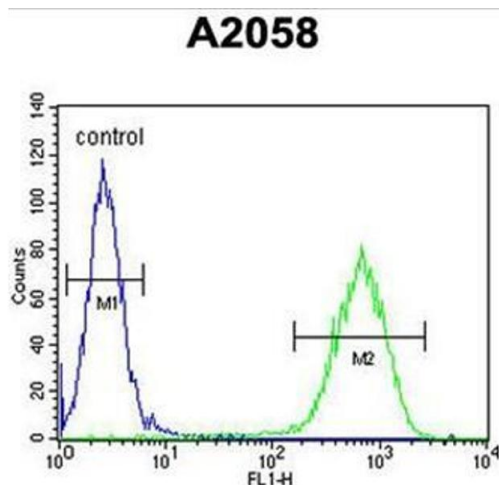
Application Details

Application Notes:	Optimal working dilution should be determined by the investigator.
Restrictions:	For Research Use only

Handling

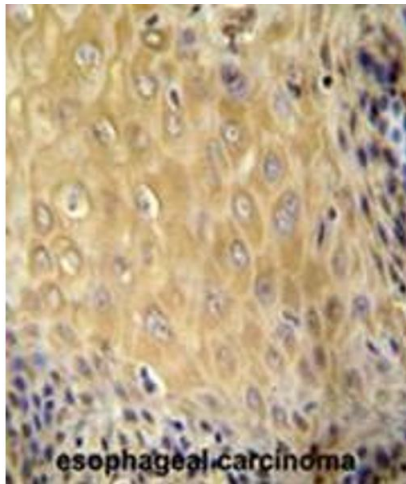
Format:	Liquid
Concentration:	0.25 mg/mL
Buffer:	PBS containing 0.09 % (W/V) sodium azide as preservative
Preservative:	Sodium azide
Precaution of Use:	This product contains sodium azide: a POISONOUS AND HAZARDOUS SUBSTANCE which should be handled by trained staff only.
Handling Advice:	Avoid repeated freezing and thawing.
Storage:	4 °C/-20 °C
Storage Comment:	Store the antibody undiluted at 2-8 °C for one month or (in aliquots) at -20 °C for longer.

Images



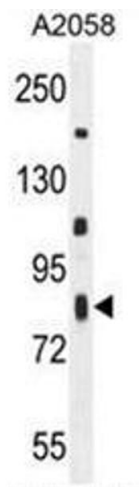
Flow Cytometry

Image 1. C6orf70 Antibody (Center) flow cytometric analysis of A2058 cells (right histogram) compared to a negative control cell (left histogram). FITC-conjugated goat-anti-rabbit secondary antibodies were used for the analysis.



Immunohistochemistry (Paraffin-embedded Sections)

Image 2. C6orf70 antibody (Center) immunohistochemistry analysis in formalin fixed and paraffin embedded human esophageal carcinoma followed by peroxidase conjugation of the secondary antibody and DAB staining. This data demonstrates the use of the C6orf70 antibody (Center) for immunohistochemistry. Clinical relevance has not been evaluated.



Western Blotting

Image 3. C6orf70 Antibody (Center) western blot analysis in A2058 cell line lysates (35µg/lane). This demonstrates the C6orf70 antibody detected the C6orf70 protein (arrow).