



Datasheet for ABIN950987
anti-SWT1 antibody (N-Term)



[Go to Product page](#)

2 Images

Overview

Quantity:	0.4 mL
Target:	SWT1
Binding Specificity:	AA 286-314, N-Term
Reactivity:	Human
Host:	Rabbit
Clonality:	Polyclonal
Conjugate:	This SWT1 antibody is un-conjugated
Application:	Western Blotting (WB), Flow Cytometry (FACS), Enzyme Immunoassay (EIA)

Product Details

Immunogen:	KLH conjugated synthetic peptide between 286-314 amino acids from the N-terminal region of human CA026
Isotype:	Ig Fraction
Specificity:	This antibody reacts to CA026.
Cross-Reactivity (Details):	Species reactivity (tested):Human.
Purification:	Affinity chromatography on Protein A

Target Details

Target:	SWT1
Abstract:	SWT1 Products

Target Details

Background:	Synonyms: C1orf26, Uncharacterized protein C1orf26
Molecular Weight:	103222 Da
Gene ID:	54823
NCBI Accession:	NP_001098988

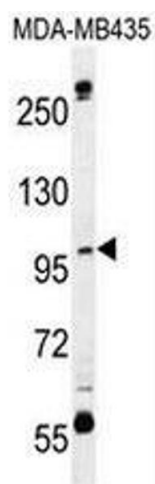
Application Details

Application Notes:	Optimal working dilution should be determined by the investigator.
Restrictions:	For Research Use only

Handling

Format:	Liquid
Concentration:	0.25 mg/mL
Buffer:	PBS, 0.09 % (W/V) sodium azide
Preservative:	Sodium azide
Precaution of Use:	This product contains sodium azide: a POISONOUS AND HAZARDOUS SUBSTANCE which should be handled by trained staff only.
Handling Advice:	Avoid repeated freezing and thawing.
Storage:	4 °C/-20 °C
Storage Comment:	Store the antibody undiluted at 2-8 °C for one month or (in aliquots) at -20 °C for longer.

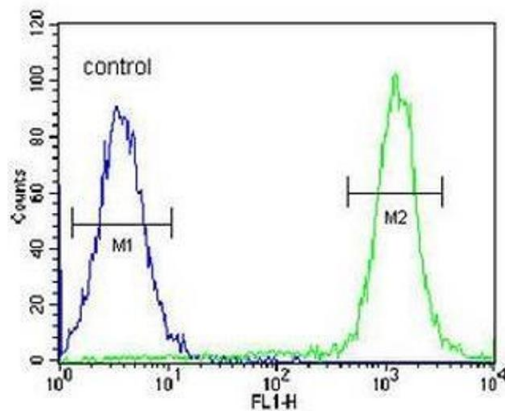
Images



Western Blotting

Image 1. CA026 Antibody (N-term) western blot analysis in MDA-MB435 cell line lysates (35µg/lane). This demonstrates the CA026 antibody detected the CA026 protein (arrow).

MDA-MB435



Flow Cytometry

Image 2. CA026 Antibody (N-term) flow cytometric analysis of MDA-MB435 cells (right histogram) compared to a negative control cell (left histogram). FITC-conjugated goat-anti-rabbit secondary antibodies were used for the analysis.