

Datasheet for ABIN950999
anti-CAD antibody (Middle Region)

2 Images

[Go to Product page](#)

Overview

Quantity:	0.4 mL
Target:	CAD
Binding Specificity:	AA 787-816, Middle Region
Reactivity:	Human
Host:	Rabbit
Clonality:	Polyclonal
Conjugate:	This CAD antibody is un-conjugated
Application:	Western Blotting (WB), Immunohistochemistry (Paraffin-embedded Sections) (IHC (p)), Enzyme Immunoassay (EIA)

Product Details

Immunogen:	KLH conjugated synthetic peptide between 787-816 amino acids from the Central region of human CAD
Isotype:	Ig Fraction
Specificity:	This antibody reacts to CAD.
Cross-Reactivity (Details):	Species reactivity (tested):Human.
Purification:	Affinity chromatography on Protein A

Target Details

Target:	CAD
---------	-----

Target Details

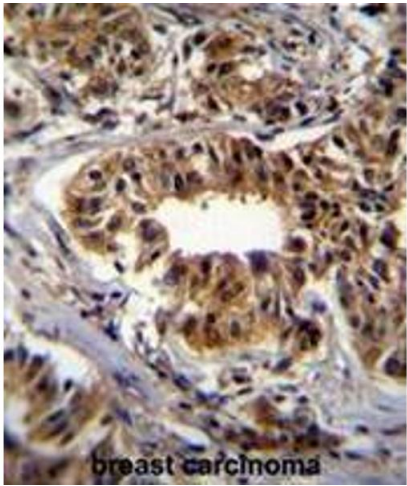
Alternative Name:	CAD Protein (CAD Products)
Background:	<p>The de novo synthesis of pyrimidine nucleotides is required for mammalian cells to proliferate. This gene encodes a trifunctional protein which is associated with the enzymatic activities of the first 3 enzymes in the 6-step pathway of pyrimidine biosynthesis: carbamoylphosphate synthetase (CPS II), aspartate transcarbamoylase, and dihydroorotase. This protein is regulated by the mitogen-activated protein kinase (MAPK) cascade, which indicates a direct link between activation of the MAPK cascade and de novo biosynthesis of pyrimidine nucleotides. Synonyms: ACTase, Aspartate carbamoyltransferase, DHOase, Dihydroorotase, GATase, Glutamine-dependent carbamoyl-phosphate synthase</p>
Molecular Weight:	242984 Da
Gene ID:	790
NCBI Accession:	NP_004332
Pathways:	Production of Molecular Mediator of Immune Response , Ribonucleoside Biosynthetic Process

Application Details

Application Notes:	Optimal working dilution should be determined by the investigator.
Restrictions:	For Research Use only

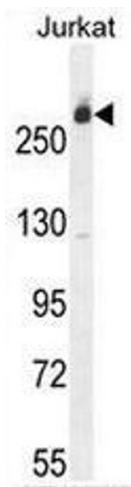
Handling

Format:	Liquid
Concentration:	0.25 mg/mL
Buffer:	PBS, 0.09 % (W/V) sodium azide
Preservative:	Sodium azide
Precaution of Use:	This product contains sodium azide: a POISONOUS AND HAZARDOUS SUBSTANCE which should be handled by trained staff only.
Handling Advice:	Avoid repeated freezing and thawing.
Storage:	4 °C/-20 °C
Storage Comment:	Store the antibody undiluted at 2-8 °C for one month or (in aliquots) at -20 °C for longer.



Immunohistochemistry (Paraffin-embedded Sections)

Image 1. CAD Antibody (Center) immunohistochemistry analysis in formalin fixed and paraffin embedded human breast carcinoma followed by peroxidase conjugation of the secondary antibody and DAB staining. This data demonstrates the use of CAD Antibody (Center) for immunohistochemistry. Clinical relevance has not been evaluated.



Western Blotting

Image 2. CAD Antibody (Center) western blot analysis in Jurkat cell line lysates (35µg/lane). This demonstrates the CAD antibody detected the CAD protein (arrow).