

Datasheet for ABIN951001

**anti-CADM1 antibody (N-Term)****3** Images[Go to Product page](#)

## Overview

Quantity:	0.4 mL
Target:	CADM1
Binding Specificity:	AA 69-98, N-Term
Reactivity:	Human, Mouse
Host:	Rabbit
Clonality:	Polyclonal
Conjugate:	This CADM1 antibody is un-conjugated
Application:	Western Blotting (WB), Immunohistochemistry (Paraffin-embedded Sections) (IHC (p)), Enzyme Immunoassay (EIA)

## Product Details

Immunogen:	KLH conjugated synthetic peptide between 69-98 amino acids from the N-terminal region of human CADM1
Isotype:	Ig Fraction
Cross-Reactivity (Details):	Species reactivity (tested): Human and Mouse.
Purification:	Affinity chromatography on Protein A

## Target Details

Target:	CADM1
Alternative Name:	CADM1 / SYNCAM ( <a href="#">CADM1 Products</a> )

## Target Details

**Background:** Mediates homophilic cell-cell adhesion in a Ca(2+)-independent manner. Also mediates heterophilic cell-cell adhesion with CADM3 and PVRL3 in a Ca(2+)-independent manner. Acts as a tumor suppressor in non-small-cell lung cancer (NSCLC) cells. Interaction with CRTAM promotes natural killer (NK) cell cytotoxicity and interferon-gamma (IFN-gamma) secretion by CD8+ cells in vitro as well as NK cell-mediated rejection of tumors expressing CADM3 in vivo. May contribute to the less invasive phenotypes of lepidic growth tumor cells. In mast cells, may mediate attachment to and promote communication with nerves. CADM1, together with MITF, is essential for development and survival of mast cells in vivo. May act as a synaptic cell adhesion molecule that drives synapse assembly. May be involved in neuronal migration, axon growth, pathfinding, and fasciculation on the axons of differentiating neurons. May play diverse roles in the spermatogenesis including in the adhesion of spermatocytes and spermatids to Sertoli cells and for their normal differentiation into mature spermatozoa. Synonyms: Cell adhesion molecule 1, IGSF4, IGSF4A, IgSF4, Immunoglobulin superfamily member 4, NECL-2, NECL2, Nectin-like protein 2, SgIgSF, Spermatogenic immunoglobulin superfamily, Synaptic cell adhesion molecule, TSLC-1, TSLC1, Tumor suppressor in lung cancer 1

**Molecular Weight:** 48509 Da

**Gene ID:** 23705

**NCBI Accession:** [NP\\_001091987](#)

**Pathways:** [Regulation of Leukocyte Mediated Immunity](#), [Positive Regulation of Immune Effector Process](#), [Cell-Cell Junction Organization](#), [Activated T Cell Proliferation](#)

## Application Details

**Application Notes:** Optimal working dilution should be determined by the investigator.

**Restrictions:** For Research Use only

## Handling

**Format:** Liquid

**Concentration:** 0.25 mg/mL

**Buffer:** PBS, 0.09 % (W/V) sodium azide

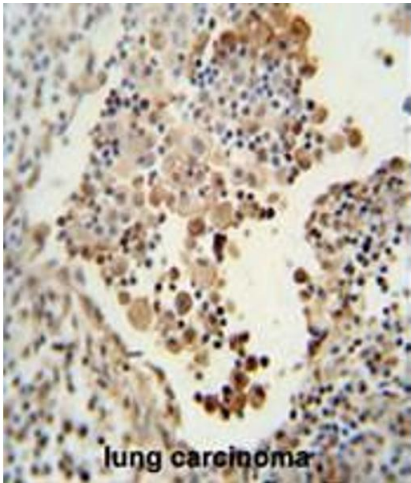
**Preservative:** Sodium azide

**Precaution of Use:** This product contains sodium azide: a POISONOUS AND HAZARDOUS SUBSTANCE which should be handled by trained staff only.

Handling

Handling Advice:	Avoid repeated freezing and thawing.
Storage:	4 °C/-20 °C
Storage Comment:	Store undiluted at 2-8 °C for one month or (in aliquots) at -20 °C for longer.

Images



Immunohistochemistry (Paraffin-embedded Sections)

**Image 1.** CADM1 antibody (N-term) immunohistochemistry analysis in formalin fixed and paraffin embedded human lung carcinoma followed by peroxidase conjugation of the secondary antibody and DAB staining. This data demonstrates the use of the CADM1 antibody (N-term) for immunohistochemistry. Clinical relevance has not been evaluated.

MDA-MB435

72

55

36

28

m.cerebellum

72

55

36

28

Western Blotting

**Image 2.** CADM1 Antibody (N-term) western blot analysis in MDA-MB435 cell line lysates (35µg/lane). This demonstrates the CADM1 antibody detected the CADM1 protein (arrow).

Western Blotting

**Image 3.** CADM1 Antibody (N-term) western blot analysis in mouse cerebellum tissue lysates (35µg/lane). This demonstrates the CADM1 antibody detected the CADM1 protein (arrow).