



[Go to Product page](#)

Datasheet for ABIN951010

## anti-Calpain 6 antibody (Middle Region)

### 2 Images

#### Overview

Quantity:	0.4 mL
Target:	Calpain 6 (CAPN6)
Binding Specificity:	AA 289-319, Middle Region
Reactivity:	Human
Host:	Rabbit
Clonality:	Polyclonal
Conjugate:	This Calpain 6 antibody is un-conjugated
Application:	Western Blotting (WB), Immunohistochemistry (Paraffin-embedded Sections) (IHC (p)), Enzyme Immunoassay (EIA)

#### Product Details

Immunogen:	KLH conjugated synthetic peptide between 289-319 amino acids from the Central region of human CAPN6
Isotype:	Ig Fraction
Specificity:	This antibody reacts to CAPN6.
Cross-Reactivity (Details):	Species reactivity (tested):Human.
Purification:	Affinity Chromatography on Protein A

#### Target Details

Target:	Calpain 6 (CAPN6)
---------	-------------------

## Target Details

---

Alternative Name:	Calpain-6 ( <a href="#">CAPN6 Products</a> )
Background:	Calpains are ubiquitous, well-conserved family of calcium-dependent, cysteine proteases. The calpain proteins are heterodimers consisting of an invariant small subunit and variable large subunits. The large subunit possesses a cysteine protease domain, and both subunits possess calcium-binding domains. Calpains have been implicated in neurodegenerative processes, as their activation can be triggered by calcium influx and oxidative stress. The protein encoded by this gene is highly expressed in the placenta. Its C-terminal region lacks any homology to the calmodulin-like domain of other calpains. The protein lacks critical active site residues and thus is suggested to be proteolytically inactive. The protein may play a role in tumor formation by inhibiting apoptosis and promoting angiogenesis.Synonyms: CALPM, CANPX, CAPN6, Calpain-like protease X-linked, Calpamodulin
Molecular Weight:	74576 Da
Gene ID:	827
NCBI Accession:	<a href="#">NP_055104</a>

## Application Details

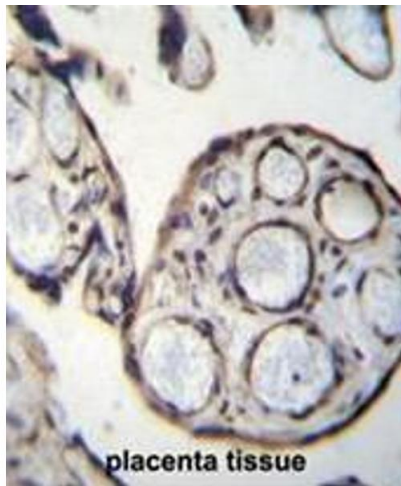
---

Application Notes:	Optimal working dilution should be determined by the investigator.
Restrictions:	For Research Use only

## Handling

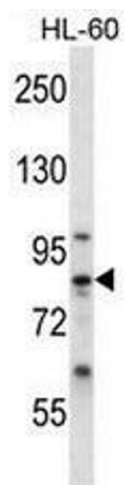
---

Format:	Liquid
Concentration:	0.25 mg/mL
Buffer:	PBS, 0.09 % (W/V) sodium azide
Preservative:	Sodium azide
Precaution of Use:	This product contains sodium azide: a POISONOUS AND HAZARDOUS SUBSTANCE which should be handled by trained staff only.
Handling Advice:	Avoid repeated freezing and thawing.
Storage:	4 °C/-20 °C
Storage Comment:	Store undiluted at 2-8 °C for one month or (in aliquots) at -20 °C for longer.



### Immunohistochemistry (Paraffin-embedded Sections)

**Image 1.** CAPN6 Antibody (Center) immunohistochemistry analysis in formalin fixed and paraffin embedded human placenta tissue followed by peroxidase conjugation of the secondary antibody and DAB staining. This data demonstrates the use of CAPN6 Antibody (Center) for immunohistochemistry. Clinical relevance has not been evaluated.



### Western Blotting

**Image 2.** CAPN6 Antibody (Center) western blot analysis in HL-60 cell line lysates (35µg/lane). This demonstrates the CAPN6 antibody detected the CAPN6 protein (arrow).