



[Go to Product page](#)

Datasheet for ABIN951014
anti-CALU antibody (C-Term)

2 Images

Overview

| | |
|----------------------|---|
| Quantity: | 0.4 mL |
| Target: | CALU |
| Binding Specificity: | AA 216-246, C-Term |
| Reactivity: | Human |
| Host: | Rabbit |
| Clonality: | Polyclonal |
| Conjugate: | This CALU antibody is un-conjugated |
| Application: | Western Blotting (WB), Enzyme Immunoassay (EIA) |

Product Details

| | |
|-----------------------------|---|
| Immunogen: | KLH conjugated synthetic peptide between 216-246 amino acids from the C-terminal region of human CALU |
| Isotype: | Ig Fraction |
| Specificity: | This antibody reacts to CALU. |
| Cross-Reactivity (Details): | Species reactivity (tested):Human. |
| Purification: | Affinity Chromatography on Protein A |

Target Details

| | |
|-------------------|---|
| Target: | CALU |
| Alternative Name: | Calumenin (CALU Products) |

Target Details

Background: The product of this gene is a calcium-binding protein localized in the endoplasmic reticulum (ER) and it is involved in such ER functions as protein folding and sorting. This protein belongs to a family of multiple EF-hand proteins (CERC) that include reticulocalbin, ERC-55, and Cab45 and the product of this gene. Alternatively spliced transcript variants encoding different isoforms have been identified. Synonyms: Crocalbin, IEF SSP 9302

Molecular Weight: 37107 Da

Gene ID: 813

NCBI Accession: [NP_001124146](#)

Application Details

Application Notes: Optimal working dilution should be determined by the investigator.

Restrictions: For Research Use only

Handling

Format: Liquid

Concentration: 0.25 mg/mL

Buffer: PBS, 0.09 % (W/V) sodium azide

Preservative: Sodium azide

Precaution of Use: This product contains sodium azide: a POISONOUS AND HAZARDOUS SUBSTANCE which should be handled by trained staff only.

Handling Advice: Avoid repeated freezing and thawing.

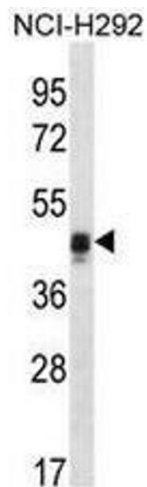
Storage: 4 °C/-20 °C

Storage Comment: Store undiluted at 2-8 °C for one month or (in aliquots) at -20 °C for longer.



Immunohistochemistry (Paraffin-embedded Sections)

Image 1. CALU Antibody (C-term) immunohistochemistry analysis in formalin fixed and paraffin embedded human placenta tissue followed by peroxidase conjugation of the secondary antibody and DAB staining. This data demonstrates the use of CALU Antibody (C-term) for immunohistochemistry. Clinical relevance has not been evaluated.



Western Blotting

Image 2. CALU Antibody (C-term) western blot analysis in NCI-H292 cell line lysates (35µg/lane). This demonstrates the CALU antibody detected the CALU protein (arrow).