



[Go to Product page](#)

Datasheet for ABIN951027
anti-CA6 antibody (C-Term)

2 Images

Overview

| | |
|----------------------|---|
| Quantity: | 0.4 mL |
| Target: | CA6 |
| Binding Specificity: | AA 245-275, C-Term |
| Reactivity: | Human |
| Host: | Rabbit |
| Clonality: | Polyclonal |
| Conjugate: | This CA6 antibody is un-conjugated |
| Application: | Western Blotting (WB), Enzyme Immunoassay (EIA) |

Product Details

| | |
|-----------------------------|--|
| Immunogen: | KLH conjugated synthetic peptide between 245-275 amino acids from the C-terminal region of human CA6 |
| Isotype: | Ig Fraction |
| Specificity: | This antibody reacts to CA6. |
| Cross-Reactivity (Details): | Species reactivity (tested):Human. |
| Purification: | Affinity chromatography on Protein A |

Target Details

| | |
|-------------------|---|
| Target: | CA6 |
| Alternative Name: | Carbonic Anhydrase 6 (CA6 Products) |

Target Details

Background: The protein encoded by this gene is one of several isozymes of carbonic anhydrase. This protein is found only in salivary glands and saliva and protein may play a role in the reversible hydration of carbon dioxide though its function in saliva is unknown. Synonyms: CA-VI, CA6, Carbonate dehydratase VI, Carbonic anhydrase VI, Salivary carbonic anhydrase, Secreted carbonic anhydrase

Molecular Weight: 35367 Da

Gene ID: 765

NCBI Accession: [NP_001206](#)

Application Details

Application Notes: Optimal working dilution should be determined by the investigator.

Restrictions: For Research Use only

Handling

Format: Liquid

Concentration: 0.25 mg/mL

Buffer: PBS, 0.09 % (W/V) sodium azide

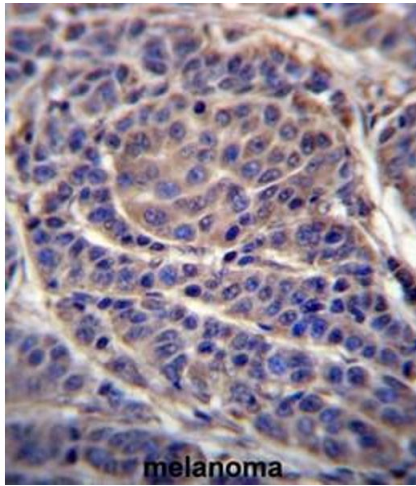
Preservative: Sodium azide

Precaution of Use: This product contains sodium azide: a POISONOUS AND HAZARDOUS SUBSTANCE which should be handled by trained staff only.

Handling Advice: Avoid repeated freezing and thawing.

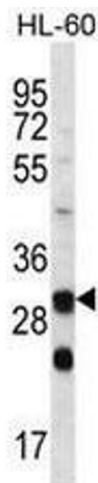
Storage: 4 °C/-20 °C

Storage Comment: Store the antibody undiluted at 2-8 °C for one month or (in aliquots) at -20 °C for longer.



Immunohistochemistry (Paraffin-embedded Sections)

Image 1. CA6 Antibody (C-term) immunohistochemistry analysis in formalin fixed and paraffin embedded human melanoma followed by peroxidase conjugation of the secondary antibody and DAB staining. This data demonstrates the use of CA6 Antibody (C-term) for immunohistochemistry. Clinical relevance has not been evaluated.



Western Blotting

Image 2. CA6 Antibody (C-term) western blot analysis in HL-60 cell line lysates (35µg/lane). This demonstrates the CA6 antibody detected the CA6 protein (arrow).