

Datasheet for ABIN951032
anti-CPA3 antibody (Middle Region)[Go to Product page](#)

2 Images

Overview

Quantity:	0.4 mL
Target:	CPA3
Binding Specificity:	AA 262-292, Middle Region
Reactivity:	Human
Host:	Rabbit
Clonality:	Polyclonal
Application:	Western Blotting (WB), Immunohistochemistry (Paraffin-embedded Sections) (IHC (p)), Enzyme Immunoassay (EIA)

Product Details

Immunogen:	KLH conjugated synthetic peptide between 262-292 amino acids from the Central region of Human CPA3. Genename: CPA3
Isotype:	Ig Fraction
Specificity:	This antibody recognizes Human Carboxypeptidase A3 (Center).
Purification:	Affinity Chromatography on Protein A

Target Details

Target:	CPA3
Alternative Name:	Carboxypeptidase A3 (CPA3 Products)
Background:	Three different forms of human pancreatic procarboxypeptidase A have been isolated. This gene encodes a form which is obtained as a binary complex of a procarboxypeptidase A with

Target Details

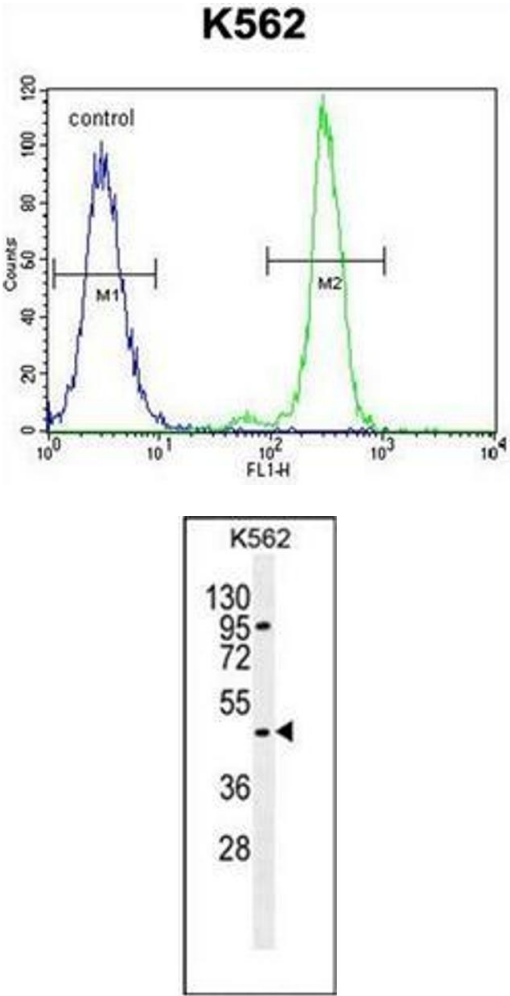
	proproteinase E and functions as a secretory granule metalloexopeptidase.Synonyms: CPA3, MC-CPA, Mast cell carboxypeptidase A
Molecular Weight:	48700 Da
Gene ID:	1359
NCBI Accession:	NP_001861
Pathways:	Peptide Hormone Metabolism , Regulation of Systemic Arterial Blood Pressure by Hormones

Application Details

Application Notes:	Optimal working dilution should be determined by the investigator.
Restrictions:	For Research Use only

Handling

Format:	Liquid
Concentration:	0.25 mg/mL
Buffer:	PBS, 0.09 % Sodium Azide
Preservative:	Sodium azide
Precaution of Use:	This product contains sodium azide: a POISONOUS AND HAZARDOUS SUBSTANCE which should be handled by trained staff only.
Handling Advice:	Avoid repeated freezing and thawing.
Storage:	4 °C/-20 °C
Storage Comment:	Store undiluted at 2-8 °C for one month or (in aliquots) at -20 °C for longer.



Flow Cytometry

Image 1. Flow cytometric analysis of K562 cells using Carboxypeptidase A3 Antibody (right histogram) compared to a negative control cell (left histogram).FITC-conjugated goat-anti-rabbit secondary antibodies were used for the analysis.

Western Blotting

Image 2. Western blot analysis of Carboxypeptidase A3 Antibody in K562 cell line lysates (35ug/lane). This demonstrates the CPA3 antibody detected the CPA3 protein (arrow).