

Datasheet for ABIN951033

**anti-CPA6 antibody (Middle Region)**[Go to Product page](#)**1** Image

## Overview

Quantity:	0.4 mL
Target:	CPA6
Binding Specificity:	AA 292-323, Middle Region
Reactivity:	Human
Host:	Rabbit
Clonality:	Polyclonal
Conjugate:	This CPA6 antibody is un-conjugated
Application:	Western Blotting (WB), Enzyme Immunoassay (EIA)

## Product Details

Immunogen:	KLH conjugated synthetic peptide between 292-323 amino acids from the Central region of Human CPA6. Genename: CPA6
Isotype:	Ig Fraction
Specificity:	This antibody recognizes Human Carboxypeptidase A6 (Center).
Purification:	Affinity Chromatography on Protein A

## Target Details

Target:	CPA6
Alternative Name:	Carboxypeptidase A6 ( <a href="#">CPA6 Products</a> )
Background:	The protein encoded by this gene belongs to the family of carboxypeptidases, which catalyze

## Target Details

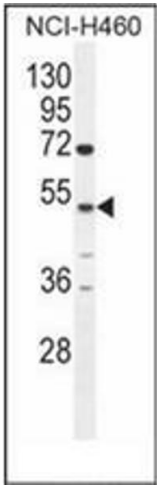
	the release of C-terminal amino acid, and have functions ranging from digestion of food to selective biosynthesis of neuroendocrine peptides. Polymorphic variants and a reciprocal translocation t(6,8)(q26,q13) involving this gene, have been associated with Duane retraction syndrome.Synonyms: CPA6, CPAH, Carboxypeptidase B
Molecular Weight:	51008 Da
Gene ID:	57094
NCBI Accession:	<a href="#">NP_065094</a>

## Application Details

Application Notes:	Optimal working dilution should be determined by the investigator.
Restrictions:	For Research Use only

## Handling

Format:	Liquid
Concentration:	0.25 mg/mL
Buffer:	PBS, 0.09 % Sodium Azide
Preservative:	Sodium azide
Precaution of Use:	This product contains sodium azide: a POISONOUS AND HAZARDOUS SUBSTANCE which should be handled by trained staff only.
Handling Advice:	Avoid repeated freezing and thawing.
Storage:	4 °C/-20 °C
Storage Comment:	Store undiluted at 2-8 °C for one month or (in aliquots) at -20 °C for longer.



#### Western Blotting

**Image 1.** Western blot analysis of Carboxypeptidase A6 Antibody in NCI-H460 cell line lysates (35ug/lane). This demonstrates the CPA6 antibody detected the CPA6 protein (arrow).