



[Go to Product page](#)

Datasheet for ABIN951034  
**anti-CPB1 antibody (N-Term)**

4 Images

Overview

Quantity:	0.4 mL
Target:	CPB1
Binding Specificity:	AA 16-45, N-Term
Reactivity:	Human
Host:	Rabbit
Clonality:	Polyclonal
Conjugate:	This CPB1 antibody is un-conjugated
Application:	Western Blotting (WB), Immunofluorescence (IF), Flow Cytometry (FACS), Immunohistochemistry (Paraffin-embedded Sections) (IHC (p)), Enzyme Immunoassay (EIA)

Product Details

Immunogen:	KLH conjugated synthetic peptide between 16-45 amino acids from the N-terminal region of Human CPB1 Genename: CPB1
Isotype:	Ig Fraction
Specificity:	This antibody recognizes Human Carboxypeptidase B (N-term).
Purification:	Affinity Chromatography on Protein A

Target Details

Target:	CPB1
Alternative Name:	Carboxypeptidase B ( <a href="#">CPB1 Products</a> )

## Target Details

---

**Background:** Three different procarboxypeptidases A and two different procarboxypeptidases B have been isolated. The B1 and B2 forms differ from each other mainly in isoelectric point. Carboxypeptidase B1 is a highly tissue-specific protein and is a useful serum marker for acute pancreatitis and dysfunction of pancreatic transplants. It is not elevated in pancreatic carcinoma. Synonyms: CPB, CPB1, PASP, PCPB, Pancreas-specific protein

**Molecular Weight:** 47368 Da

**Gene ID:** 1360

**NCBI Accession:** [NP\\_001862](#)

## Application Details

---

**Application Notes:** Optimal working dilution should be determined by the investigator.

**Restrictions:** For Research Use only

## Handling

---

**Format:** Liquid

**Concentration:** 0.25 mg/mL

**Buffer:** PBS, 0.09 % Sodium Azide

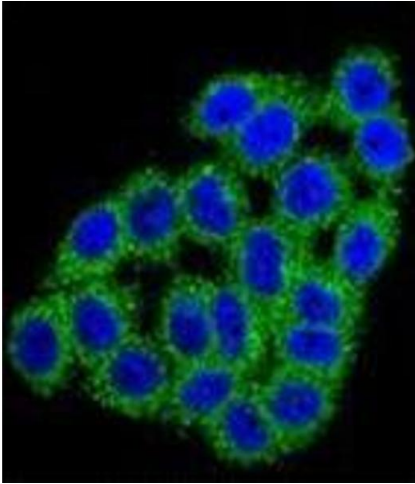
**Preservative:** Sodium azide

**Precaution of Use:** This product contains sodium azide: a POISONOUS AND HAZARDOUS SUBSTANCE which should be handled by trained staff only.

**Handling Advice:** Avoid repeated freezing and thawing.

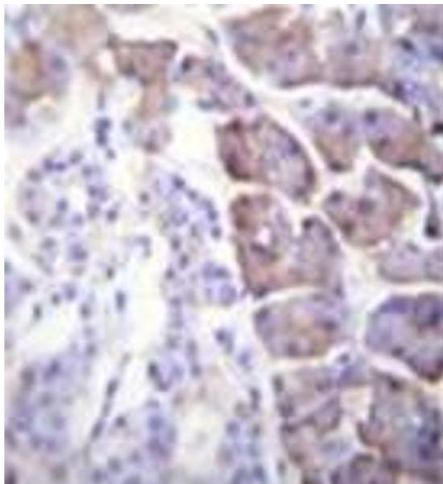
**Storage:** 4 °C/-20 °C

**Storage Comment:** Store undiluted at 2-8 °C for one month or (in aliquots) at -20 °C for longer.



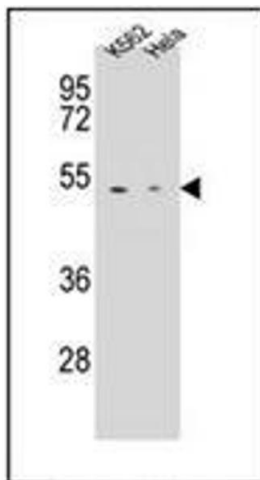
### Immunofluorescence

**Image 1.** Confocal immunofluorescent analysis of Carboxypeptidase B Antibody (N-term) Cat.-No AP51047PU-N with HeLa cell followed by Alexa Fluor 488-conjugated goat anti-rabbit IgG (green). DAPI was used to stain the cell nuclear (blue)



### Immunohistochemistry (Paraffin-embedded Sections)

**Image 2.** Formalin fixed and paraffin embedded human pancreas tissue stained with Carboxypeptidase B Antibody (N-term) followed by peroxidase conjugation of the secondary antibody and DAB staining. This data demonstrates the use of CPB1 Antibody (N-term) for immunohistochemistry. Clinical relevance has not been evaluated.



### Western Blotting

**Image 3.** Western blot analysis of Carboxypeptidase B Antibody (N-term) in K562, HeLa cell line lysates (35ug/lane). This demonstrates the CPB1 antibody detected the CPB1 protein (arrow).

Please check the [product details page](#) for more images. Overall 4 images are available for ABIN951034.