

Datasheet for ABIN951045

anti-Cardiotrophin 1 antibody (C-Term)[Go to Product page](#)**1** Image

Overview

Quantity:	0.4 mL
Target:	Cardiotrophin 1 (CTF1)
Binding Specificity:	AA 165-194, C-Term
Reactivity:	Human
Host:	Rabbit
Clonality:	Polyclonal
Conjugate:	This Cardiotrophin 1 antibody is un-conjugated
Application:	Western Blotting (WB), Enzyme Immunoassay (EIA)

Product Details

Immunogen:	KLH conjugated synthetic peptide between 165-194 amino acids from the C-terminal region of Human CTF1. Genename: CTF1
Isotype:	Ig Fraction
Specificity:	This antibody recognizes Human Cardiotrophin-1 (C-term).
Purification:	Affinity Chromatography on Protein A

Target Details

Target:	Cardiotrophin 1 (CTF1)
Alternative Name:	Cardiotrophin-1 (CTF1 Products)
Background:	The protein encoded by this gene is a secreted cytokine that induces cardiac myocyte

Target Details

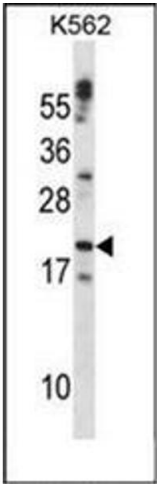
	hypertrophy in vitro. It has been shown to bind and activate the ILST/gp130 receptor. Two transcript variants encoding different isoforms have been found for this gene.Synonyms: CT-1, CTF1
Molecular Weight:	21227 Da
Gene ID:	1489
NCBI Accession:	NP_001136016
Pathways:	JAK-STAT Signaling

Application Details

Application Notes:	Optimal working dilution should be determined by the investigator.
Restrictions:	For Research Use only

Handling

Format:	Liquid
Concentration:	0.25 mg/mL
Buffer:	PBS, 0.09 % Sodium Azide
Preservative:	Sodium azide
Precaution of Use:	This product contains sodium azide: a POISONOUS AND HAZARDOUS SUBSTANCE which should be handled by trained staff only.
Handling Advice:	Avoid repeated freezing and thawing.
Storage:	4 °C/-20 °C
Storage Comment:	Store undiluted at 2-8 °C for one month or (in aliquots) at -20 °C for longer.



Western Blotting

Image 1. Western blot analysis of Cardiotrophin-1 Antibody (C-term) in K562 cell line lysates (35ug/lane). This demonstrates the CTF1 antibody detected the CTF1 protein (arrow).