

Datasheet for ABIN951069  
**anti-CATSPER1 antibody (N-Term)**[Go to Product page](#)

## 1 Image

## Overview

Quantity:	0.4 mL
Target:	CATSPER1
Binding Specificity:	AA 35-65, N-Term
Reactivity:	Human
Host:	Rabbit
Clonality:	Polyclonal
Conjugate:	This CATSPER1 antibody is un-conjugated
Application:	Western Blotting (WB), Enzyme Immunoassay (EIA)

## Product Details

Immunogen:	KLH conjugated synthetic peptide between 35-65 amino acids from the N-terminal region of human CATSPER1
Isotype:	Ig Fraction
Specificity:	This antibody reacts to CATSPER1.
Cross-Reactivity (Details):	Species reactivity (tested):Human.
Purification:	Affinity chromatography on Protein A

## Target Details

Target:	CATSPER1
Alternative Name:	CATSPER1 ( <a href="#">CATSPER1 Products</a> )

## Target Details

Background:	Calcium ions play a primary role in the regulation of sperm motility. This gene belongs to a family of putative cation channels that are specific to spermatozoa and localize to the flagellum. The protein family features a single repeat with six membrane-spanning segments and a predicted calcium-selective pore region.Synonyms: Cation channel sperm-associated protein 1
-------------	---

Molecular Weight:	90091 Da
-------------------	----------

Gene ID:	117144
----------	--------

NCBI Accession:	<a href="#">NP_444282</a>
-----------------	---------------------------

## Application Details

Application Notes:	Optimal working dilution should be determined by the investigator.
--------------------	--

Restrictions:	For Research Use only
---------------	-----------------------

## Handling

Format:	Liquid
---------	--------

Concentration:	0.25 mg/mL
----------------	------------

Buffer:	PBS, 0.09 % (W/V) sodium azide
---------	--------------------------------

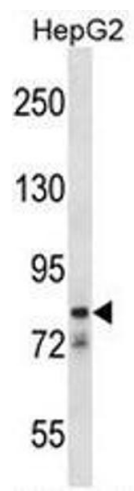
Preservative:	Sodium azide
---------------	--------------

Precaution of Use:	This product contains sodium azide: a POISONOUS AND HAZARDOUS SUBSTANCE which should be handled by trained staff only.
--------------------	--

Handling Advice:	Avoid repeated freezing and thawing.
------------------	--------------------------------------

Storage:	4 °C/-20 °C
----------	-------------

Storage Comment:	Store undiluted at 2-8 °C for one month or (in aliquots) at -20 °C for longer.
------------------	--



Western Blotting

**Image 1.** CATSPER1 Antibody (N-term) western blot analysis in HepG2 cell line lysates (35µg/lane). This demonstrates the CATSPER1 antibody detected the CATSPER1 protein (arrow).