

Datasheet for ABIN951076

anti-CBY1/PGEA1 antibody (C-Term)**3** Images[Go to Product page](#)

Overview

Quantity:	0.4 mL
Target:	CBY1/PGEA1 (CBY1)
Binding Specificity:	AA 97-126, C-Term
Reactivity:	Human
Host:	Rabbit
Clonality:	Polyclonal
Conjugate:	This CBY1/PGEA1 antibody is un-conjugated
Application:	Western Blotting (WB), Flow Cytometry (FACS), Immunohistochemistry (Paraffin-embedded Sections) (IHC (p)), Enzyme Immunoassay (EIA)

Product Details

Immunogen:	KLH conjugated synthetic peptide between 97~126 amino acids from the C-terminal region of human CBY1
Isotype:	Ig Fraction
Specificity:	This antibody recognizes Human CBY1 (C-term).
Purification:	Protein A column, followed by peptide affinity purification

Target Details

Target:	CBY1/PGEA1 (CBY1)
Alternative Name:	CBY1 (CBY1 Products)

Target Details

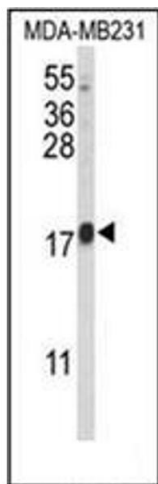
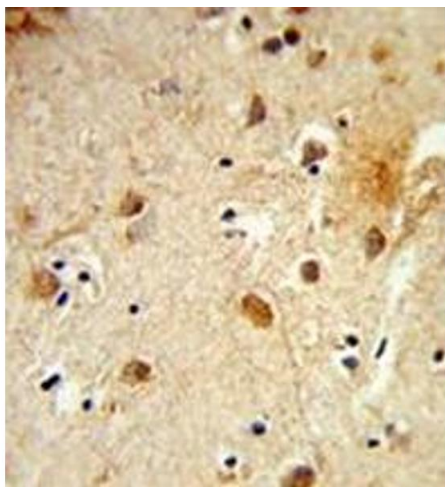
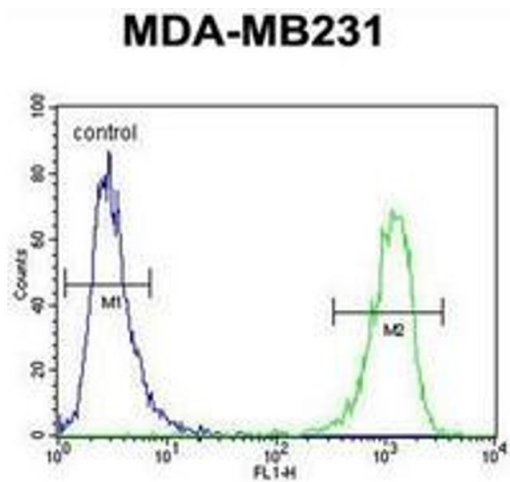
Background:	Inhibits the Wnt/Wingless pathway by binding to beta catenin and inhibiting beta catenin mediated transcriptional activation by competing with TCF/LEF transcription factors. Has also been shown to play a role in regulating the intracellular trafficking of polycystin 2/PKD2 and possibly of other intracellular proteins.Synonyms: ARB1, ARPP-binding protein, C22orf2, CBY, Cytosolic leucine-rich protein, Golgi and endoplasmic reticulum-associated 1, HRIHFB2025, PGEA1, PIGEA-14, PKD2 interactor, Protein chibby homolog 1
Molecular Weight:	14470 Da
Gene ID:	25776
NCBI Accession:	NP_001002880

Application Details

Application Notes:	Optimal working dilution should be determined by the investigator.
Restrictions:	For Research Use only

Handling

Format:	Liquid
Concentration:	0.25 mg/mL
Buffer:	PBS containing 0.09 % (W/V) Sodium Azide as preservative
Preservative:	Sodium azide
Precaution of Use:	This product contains sodium azide: a POISONOUS AND HAZARDOUS SUBSTANCE which should be handled by trained staff only.
Handling Advice:	Avoid repeated freezing and thawing.
Storage:	4 °C/-20 °C
Storage Comment:	Store undiluted at 2-8 °C for one month or (in aliquots) at -20 °C for longer.



Flow Cytometry

Image 1. Flow cytometric analysis of MDA-MB231 cells using CBY1 Antibody (C-term) Cat.-No AP52100PU-N (right histogram) compared to a negative control cell (left histogram). FITC-conjugated goat-anti-rabbit secondary antibodies were used for the analysis.

Immunohistochemistry (Paraffin-embedded Sections)

Image 2. Formalin-fixed and paraffin-embedded human brain tissue reacted with CBY1 Antibody (C-term) followed which was peroxidase-conjugated to the secondary antibody, followed by DAB staining.

Western Blotting

Image 3. Western blot analysis of CBY1 Antibody (C-term) in MDA-MB231 cell line lysates (35ug/lane).