

Datasheet for ABIN951078

anti-C3orf58 antibody (Middle Region)[Go to Product page](#)**2** Images

Overview

Quantity:	0.4 mL
Target:	C3orf58 (C3ORF58)
Binding Specificity:	AA 166-196, Middle Region
Reactivity:	Human, Mouse
Host:	Rabbit
Clonality:	Polyclonal
Conjugate:	This C3orf58 antibody is un-conjugated
Application:	Western Blotting (WB), Immunohistochemistry (Paraffin-embedded Sections) (IHC (p)), Enzyme Immunoassay (EIA)

Product Details

Immunogen:	KLH conjugated synthetic peptide between 166~196 amino acids from the Central region of human CC058
Isotype:	Ig Fraction
Specificity:	This antibody reacts to CC058.
Cross-Reactivity (Details):	Species reactivity (tested):Human and Mouse.
Purification:	Affinity chromatography on Protein A

Target Details

Target:	C3orf58 (C3ORF58)
---------	-------------------

Target Details

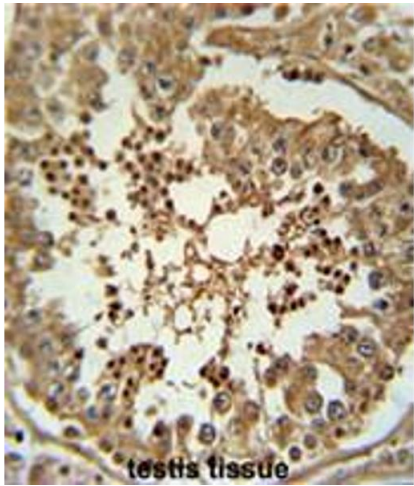
Alternative Name:	CC058 (C3ORF58 Products)
Background:	Synonyms: C3orf58, UPF0672 protein C3orf58
Molecular Weight:	49482 Da
Gene ID:	205428
NCBI Accession:	NP_001127942

Application Details

Application Notes:	Optimal working dilution should be determined by the investigator.
Restrictions:	For Research Use only

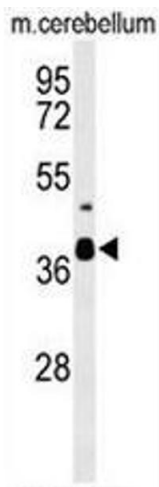
Handling

Format:	Liquid
Concentration:	0.25 mg/mL
Buffer:	PBS, 0.09 % (W/V) sodium azide
Preservative:	Sodium azide
Precaution of Use:	This product contains sodium azide: a POISONOUS AND HAZARDOUS SUBSTANCE which should be handled by trained staff only.
Handling Advice:	Avoid repeated freezing and thawing.
Storage:	4 °C/-20 °C
Storage Comment:	Store undiluted at 2-8 °C for one month or (in aliquots) at -20 °C for longer.



Immunohistochemistry (Paraffin-embedded Sections)

Image 1. CC058 Antibody (Center) immunohistochemistry analysis in formalin fixed and paraffin embedded human testis tissue followed by peroxidase conjugation of the secondary antibody and DAB staining. This data demonstrates the use of the CC058 Antibody (Center) for immunohistochemistry. Clinical relevance has not been evaluated.



Western Blotting

Image 2. Western blot analysis of CC058 Antibody (Center) in mouse cerebellum tissue lysates (35µg/lane). CC058 (arrow) was detected using the purified Pab.