



[Go to Product page](#)

Datasheet for ABIN951081

anti-CCDC33 antibody (C-Term)

1 Image

Overview

Quantity:	0.4 mL
Target:	CCDC33
Binding Specificity:	AA 873-901, C-Term
Reactivity:	Human
Host:	Rabbit
Clonality:	Polyclonal
Conjugate:	This CCDC33 antibody is un-conjugated
Application:	Western Blotting (WB), Enzyme Immunoassay (EIA)

Product Details

Immunogen:	KLH conjugated synthetic peptide between 873-901 amino acids from the C-terminal region of human CCD33
Isotype:	Ig Fraction
Specificity:	This antibody reacts to CCD33.
Cross-Reactivity (Details):	Species reactivity (tested):Human.
Purification:	Affinity chromatography on Protein A

Target Details

Target:	CCDC33
Abstract:	CCDC33 Products

Target Details

Background:	Synonyms: CCDC33, Coiled-coil domain-containing protein 33
Molecular Weight:	107216 Da
Gene ID:	80125
NCBI Accession:	NP_079331

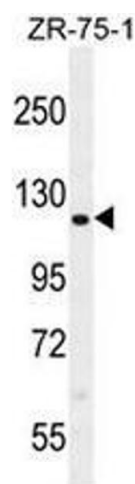
Application Details

Application Notes:	Optimal working dilution should be determined by the investigator.
Restrictions:	For Research Use only

Handling

Format:	Liquid
Concentration:	0.25 mg/mL
Buffer:	PBS, 0.09 % (W/V) sodium azide
Preservative:	Sodium azide
Precaution of Use:	This product contains sodium azide: a POISONOUS AND HAZARDOUS SUBSTANCE which should be handled by trained staff only.
Handling Advice:	Avoid repeated freezing and thawing.
Storage:	4 °C/-20 °C
Storage Comment:	Store undiluted at 2-8 °C for one month or (in aliquots) at -20 °C for longer.

Images



Western Blotting

Image 1. CCD33 Antibody (C-term) western blot analysis in ZR-75-1 cell line lysates (35µg/lane). This demonstrates the CCD33 antibody detected the CCD33 protein (arrow).