



Datasheet for ABIN951082  
**anti-CCDC102A antibody (C-Term)**



[Go to Product page](#)

2 Images

Overview

Quantity:	0.4 mL
Target:	CCDC102A
Binding Specificity:	AA 408-438, C-Term
Reactivity:	Mouse, Human
Host:	Rabbit
Clonality:	Polyclonal
Application:	Western Blotting (WB), Immunohistochemistry (Paraffin-embedded Sections) (IHC (p)), Enzyme Immunoassay (EIA)

Product Details

Immunogen:	KLH conjugated synthetic peptide between 408-438 amino acids from the C-terminal region of human CCDC102A.
Isotype:	Ig Fraction
Specificity:	This antibody reacts to CCDC102A.
Cross-Reactivity (Details):	Species reactivity (tested):Mouse.
Purification:	Affinity chromatography on Protein A

Target Details

Target:	CCDC102A
Alternative Name:	CCDC102A ( <a href="#">CCDC102A Products</a> )

## Target Details

Background:	Synonyms: Coiled-coil domain-containing protein 102A
Molecular Weight:	62596 Da
Gene ID:	92922
NCBI Accession:	<a href="#">NP_149989</a>

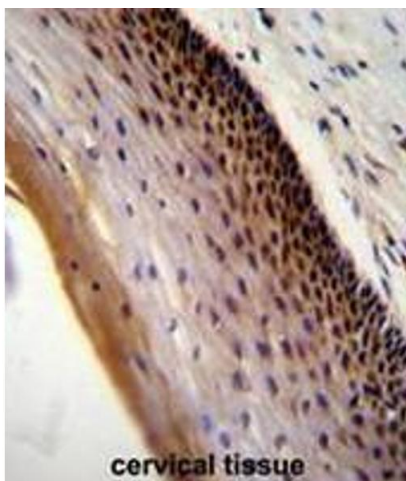
## Application Details

Application Notes:	Optimal working dilution should be determined by the investigator.
Restrictions:	For Research Use only

## Handling

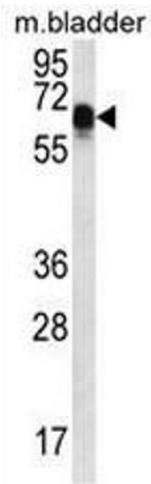
Format:	Liquid
Concentration:	0.25 mg/mL
Buffer:	PBS, 0.09 % (W/V) sodium azide
Preservative:	Sodium azide
Precaution of Use:	This product contains sodium azide: a POISONOUS AND HAZARDOUS SUBSTANCE which should be handled by trained staff only.
Handling Advice:	Avoid repeated freezing and thawing.
Storage:	4 °C/-20 °C
Storage Comment:	Store undiluted at 2-8 °C for one month or (in aliquots) at -20 °C for longer.

## Images



### Immunohistochemistry (Paraffin-embedded Sections)

**Image 1.** CCDC102A Antibody (C-term) immunohistochemistry analysis in formalin fixed and paraffin embedded human cervical tissue followed by peroxidase conjugation of the secondary antibody and DAB staining. This data demonstrates the use of CCDC102A Antibody (C-term) for immunohistochemistry. Clinical relevance has not been evaluated.



### Western Blotting

**Image 2.** CCDC102A Antibody (C-term) western blot analysis in mouse bladder tissue lysates (35µg/lane). This demonstrates the CCDC102A antibody detected the CCDC102A protein (arrow).