



[Go to Product page](#)

Datasheet for ABIN951084

anti-CCDC110 antibody (C-Term)

2 Images

Overview

Quantity:	0.4 mL
Target:	CCDC110
Binding Specificity:	AA 784-814, C-Term
Reactivity:	Mouse, Human
Host:	Rabbit
Clonality:	Polyclonal
Conjugate:	This CCDC110 antibody is un-conjugated
Application:	Western Blotting (WB), Immunohistochemistry (Paraffin-embedded Sections) (IHC (p)), Enzyme Immunoassay (EIA)

Product Details

Immunogen:	KLH conjugated synthetic peptide between 784-814 amino acids from the C-terminal region of human CCDC110
Isotype:	Ig Fraction
Specificity:	This antibody reacts to CCDC110.
Cross-Reactivity (Details):	Species reactivity (tested):Mouse.
Purification:	Affinity chromatography on Protein A

Target Details

Target:	CCDC110
---------	---------

Target Details

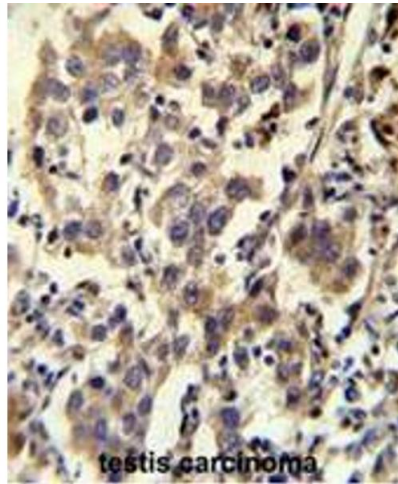
Alternative Name:	CCDC110 (CCDC110 Products)
Background:	Synonyms: CT52, Cancer/testis antigen 52, Cancer/testis antigen KM-HN-1, Coiled-coil domain-containing protein 110, KM-HN-1, KMHN1
Molecular Weight:	96726 Da
Gene ID:	256309
NCBI Accession:	NP_001138883

Application Details

Application Notes:	Optimal working dilution should be determined by the investigator.
Restrictions:	For Research Use only

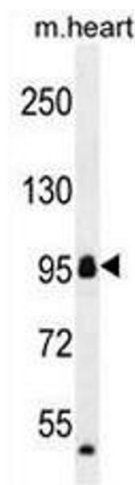
Handling

Format:	Liquid
Concentration:	0.25 mg/mL
Buffer:	PBS, 0.09 % (W/V) sodium azide
Preservative:	Sodium azide
Precaution of Use:	This product contains sodium azide: a POISONOUS AND HAZARDOUS SUBSTANCE which should be handled by trained staff only.
Handling Advice:	Avoid repeated freezing and thawing.
Storage:	4 °C/-20 °C
Storage Comment:	Store undiluted at 2-8 °C for one month or (in aliquots) at -20 °C for longer.



Immunohistochemistry (Paraffin-embedded Sections)

Image 1. CCDC110 Antibody (C-term) immunohistochemistry analysis in formalin fixed and paraffin embedded human testis carcinoma followed by peroxidase conjugation of the secondary antibody and DAB staining. This data demonstrates the use of CCDC110 Antibody (C-term) for immunohistochemistry. Clinical relevance has not been evaluated.



Western Blotting

Image 2. CCDC110 Antibody (C-term) western blot analysis in mouse heart tissue lysates (35µg/lane). This demonstrates the CCDC110 antibody detected the CCDC110 protein (arrow).