

Datasheet for ABIN951088
anti-CEP89 antibody (C-Term)

3 Images

[Go to Product page](#)

Overview

Quantity:	0.4 mL
Target:	CEP89
Binding Specificity:	AA 663-694, C-Term
Reactivity:	Human, Mouse
Host:	Rabbit
Clonality:	Polyclonal
Application:	Western Blotting (WB), Flow Cytometry (FACS), Immunohistochemistry (Paraffin-embedded Sections) (IHC (p)), Enzyme Immunoassay (EIA)

Product Details

Immunogen:	KLH conjugated synthetic peptide between 663-694 amino acids from the C-terminal region of human CCDC123
Isotype:	Ig Fraction
Specificity:	This antibody reacts to CCDC123.
Cross-Reactivity (Details):	Species reactivity (tested): Human and Mouse.
Purification:	Affinity chromatography on Protein A

Target Details

Target:	CEP89
Alternative Name:	CCDC123 (CEP89 Products)

Target Details

Background:	Synonyms: Coiled-coil domain-containing protein 123, mitochondrial
Molecular Weight:	89590 Da
Gene ID:	84902
NCBI Accession:	NP_116205

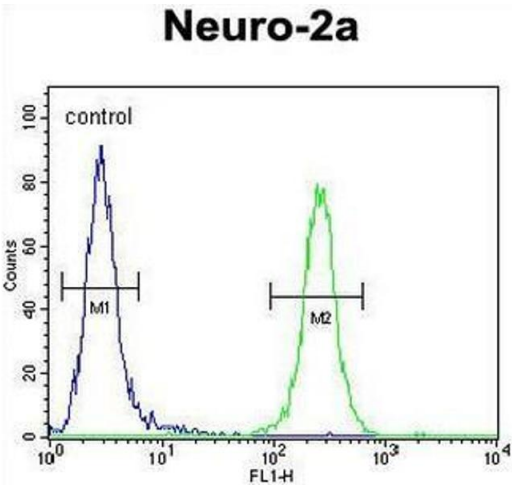
Application Details

Application Notes:	Optimal working dilution should be determined by the investigator.
Restrictions:	For Research Use only

Handling

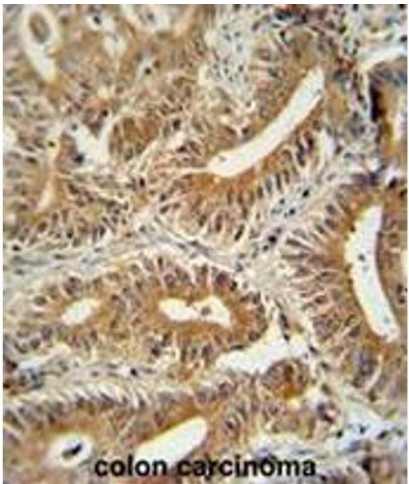
Format:	Liquid
Concentration:	0.25 mg/mL
Buffer:	PBS, 0.09 % (W/V) sodium azide
Preservative:	Sodium azide
Precaution of Use:	This product contains sodium azide: a POISONOUS AND HAZARDOUS SUBSTANCE which should be handled by trained staff only.
Handling Advice:	Avoid repeated freezing and thawing.
Storage:	4 °C/-20 °C
Storage Comment:	Store undiluted at 2-8 °C for one month or (in aliquots) at -20 °C for longer.

Images



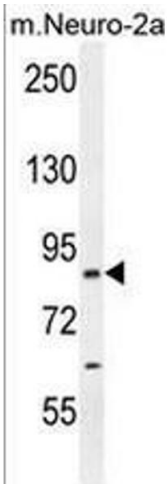
Flow Cytometry

Image 1. CCDC123 Antibody (C-term) flow cytometric analysis of Neuro-2a cells (right histogram) compared to a negative control cell (left histogram). FITC-conjugated goat-anti-rabbit secondary antibodies were used for the analysis.



Immunohistochemistry (Paraffin-embedded Sections)

Image 2. CCDC123 antibody (C-term) immunohistochemistry analysis in formalin fixed and paraffin embedded human colon carcinoma followed by peroxidase conjugation of the secondary antibody and DAB staining. This data demonstrates the use of the CCDC123 antibody (C-term) for immunohistochemistry. Clinical relevance has not been evaluated.



Western Blotting

Image 3. CCDC123 Antibody (C-term) western blot analysis in mouse Neuro-2a cell line lysates (35µg/lane). This demonstrates the CCDC123 antibody detected the CCDC123 protein (arrow).