



[Go to Product page](#)

Datasheet for ABIN951091

anti-KLRAQ1 antibody (Middle Region)

2 Images

Overview

Quantity:	0.4 mL
Target:	KLRAQ1
Binding Specificity:	AA 214-243, Middle Region
Reactivity:	Human
Host:	Rabbit
Clonality:	Polyclonal
Conjugate:	This KLRAQ1 antibody is un-conjugated
Application:	Western Blotting (WB), Immunohistochemistry (Paraffin-embedded Sections) (IHC (p)), Enzyme Immunoassay (EIA)

Product Details

Immunogen:	KLH conjugated synthetic peptide between 214-243 amino acids from the Central region of Human CCDC128 Genename: KLRAQ1
Isotype:	Ig Fraction
Specificity:	This antibody recognizes Human CCDC128 (Center).
Purification:	Protein A column, followed by peptide affinity purification

Target Details

Target:	KLRAQ1
Alternative Name:	CCDC128 (KLRAQ1 Products)

Target Details

Background:	Synonyms: Coiled-coil domain containing 128, KLRAQ motif-containing protein 1, KLRAQ1
Molecular Weight:	88314 Da
Gene ID:	129285
NCBI Accession:	NP_001129101

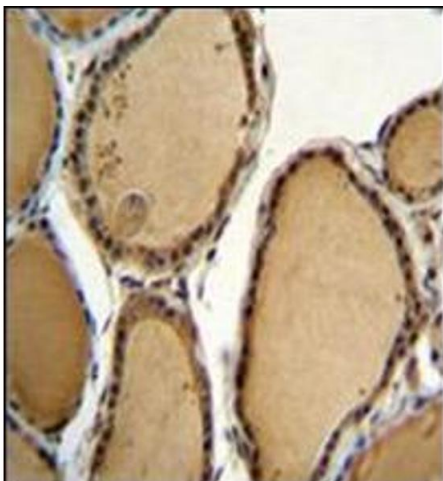
Application Details

Application Notes:	Optimal working dilution should be determined by the investigator.
Restrictions:	For Research Use only

Handling

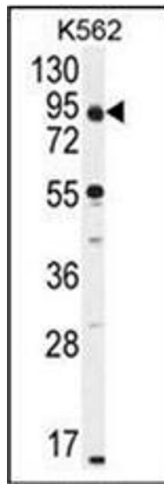
Format:	Liquid
Concentration:	0.25 mg/mL
Buffer:	PBS containing 0.09 % (W/V) Sodium Azide as preservative
Preservative:	Sodium azide
Precaution of Use:	This product contains sodium azide: a POISONOUS AND HAZARDOUS SUBSTANCE which should be handled by trained staff only.
Handling Advice:	Avoid repeated freezing and thawing.
Storage:	4 °C/-20 °C
Storage Comment:	Store undiluted at 2-8 °C for one month or (in aliquots) at -20 °C for longer.

Images



Immunohistochemistry (Paraffin-embedded Sections)

Image 1. Immunohistochemistry analysis in formalin fixed and paraffin embedded human thyroid tissue reacted with CCDC128 Antibody (Center) followed by peroxidase conjugation of the secondary antibody and DAB staining.



Western Blotting

Image 2. Western blot analysis of CCDC128 Antibody (Center) in K562 cell line lysates (35ug/lane).