



[Go to Product page](#)

Datasheet for ABIN951092  
**anti-CCDC13 antibody (N-Term)**

2 Images

### Overview

Quantity:	0.4 mL
Target:	CCDC13
Binding Specificity:	AA 58-87, N-Term
Reactivity:	Human
Host:	Rabbit
Clonality:	Polyclonal
Conjugate:	This CCDC13 antibody is un-conjugated
Application:	Western Blotting (WB), Immunohistochemistry (Paraffin-embedded Sections) (IHC (p)), Enzyme Immunoassay (EIA)

### Product Details

Immunogen:	KLH conjugated synthetic peptide between 58-87 amino acids from the N-terminal region of human CCDC13
Isotype:	Ig Fraction
Specificity:	This antibody reacts to CCDC13.
Cross-Reactivity (Details):	Species reactivity (tested):Human.
Purification:	Affinity chromatography on protein A

### Target Details

Target:	CCDC13
---------	--------

## Target Details

---

Alternative Name:	CCDC13 ( <a href="#">CCDC13 Products</a> )
Background:	Synonyms: Coiled-coil domain-containing protein 13
Molecular Weight:	80884 Da
Gene ID:	152206
NCBI Accession:	<a href="#">NP_653320</a>

## Application Details

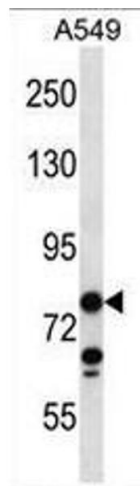
---

Application Notes:	Optimal working dilution should be determined by the investigator.
Restrictions:	For Research Use only

## Handling

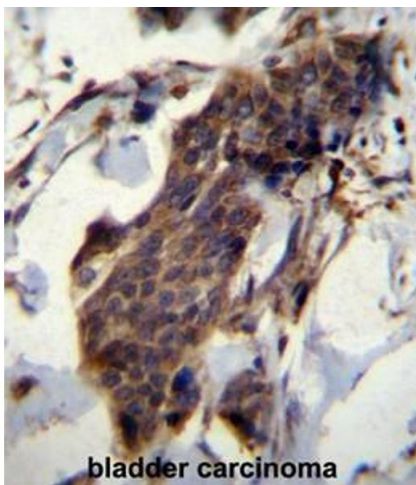
---

Format:	Liquid
Concentration:	0.25 mg/mL
Buffer:	PBS, 0.09 % (W/V) sodium azide
Preservative:	Sodium azide
Precaution of Use:	This product contains sodium azide: a POISONOUS AND HAZARDOUS SUBSTANCE which should be handled by trained staff only.
Handling Advice:	Avoid repeated freezing and thawing.
Storage:	4 °C/-20 °C
Storage Comment:	Store undiluted at 2-8 °C for one month or (in aliquots) at -20 °C for longer.



### Western Blotting

**Image 1.** CCDC13 Antibody (N-term) western blot analysis in A549 cell line lysates (35µg/lane). This demonstrates the CCDC13 antibody detected the CCDC13 protein (arrow).



### Immunohistochemistry (Paraffin-embedded Sections)

**Image 2.** CCDC13 Antibody (N-term) immunohistochemistry analysis in formalin fixed and paraffin embedded human bladder carcinoma followed by peroxidase conjugation of the secondary antibody and DAB staining. This data demonstrates the use of CCDC13 Antibody (N-term) for immunohistochemistry. Clinical relevance has not been evaluated.