



[Go to Product page](#)

Datasheet for ABIN951094

anti-CCDC141 antibody (N-Term)

1 Image

Overview

Quantity:	0.4 mL
Target:	CCDC141
Binding Specificity:	AA 1-30, N-Term
Reactivity:	Human
Host:	Rabbit
Clonality:	Polyclonal
Conjugate:	This CCDC141 antibody is un-conjugated
Application:	Western Blotting (WB), Enzyme Immunoassay (EIA)

Product Details

Immunogen:	KLH conjugated synthetic peptide between 1-30 amino acids from the N-terminal region of human CCDC141
Isotype:	Ig Fraction
Specificity:	This antibody reacts to CCDC141.
Cross-Reactivity (Details):	Species reactivity (tested):Human.
Purification:	Affinity chromatography on Protein A

Target Details

Target:	CCDC141
Alternative Name:	CCDC141 (CCDC141 Products)

Target Details

Background:	Synonyms: Coiled-coil domain-containing protein 141
Molecular Weight:	100581 Da
Gene ID:	285025
NCBI Accession:	NP_775919

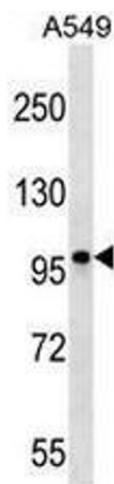
Application Details

Application Notes:	Optimal working dilution should be determined by the investigator.
Restrictions:	For Research Use only

Handling

Format:	Liquid
Concentration:	0.25 mg/mL
Buffer:	PBS, 0.09 % (W/V) sodium azide
Preservative:	Sodium azide
Precaution of Use:	This product contains sodium azide: a POISONOUS AND HAZARDOUS SUBSTANCE which should be handled by trained staff only.
Handling Advice:	Avoid repeated freezing and thawing.
Storage:	4 °C/-20 °C
Storage Comment:	Store undiluted at 2-8 °C for one month or (in aliquots) at -20 °C for longer.

Images



Western Blotting

Image 1. CCDC141 Antibody (N-term) western blot analysis in A549 cell line lysates (35µg/lane). This demonstrates the CCDC141 antibody detected the CCDC141 protein (arrow).