



[Go to Product page](#)

Datasheet for ABIN951095

anti-CCDC148 antibody (Middle Region)

3 Images

Overview

Quantity:	0.4 mL
Target:	CCDC148
Binding Specificity:	AA 286-316, Middle Region
Reactivity:	Human, Mouse
Host:	Rabbit
Clonality:	Polyclonal
Application:	Western Blotting (WB), Flow Cytometry (FACS), Enzyme Immunoassay (EIA)

Product Details

Immunogen:	KLH conjugated synthetic peptide between 286-316 amino acids from the Central region of human CCDC148
Isotype:	Ig Fraction
Specificity:	This antibody reacts to CCDC148.
Cross-Reactivity (Details):	Species reactivity (tested): Human and Mouse.
Purification:	Affinity chromatography on Protein A

Target Details

Target:	CCDC148
Alternative Name:	CCDC148 (CCDC148 Products)
Background:	Synonyms: Coiled-coil domain-containing protein 148

Target Details

Molecular Weight:	71104 Da
Gene ID:	130940
NCBI Accession:	NP_620158

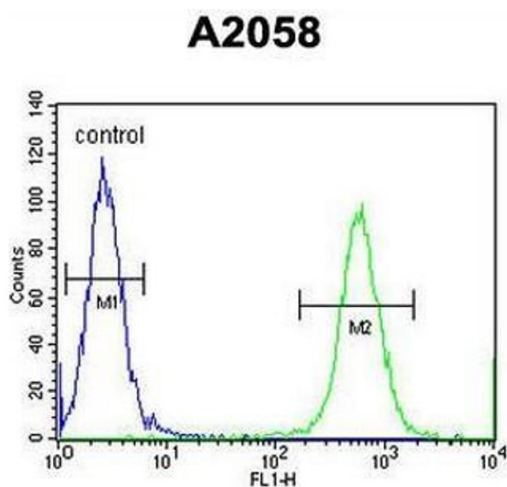
Application Details

Application Notes:	Optimal working dilution should be determined by the investigator.
Restrictions:	For Research Use only

Handling

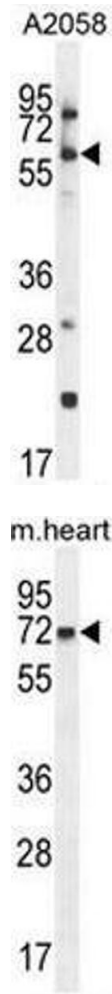
Format:	Liquid
Concentration:	0.25 mg/mL
Buffer:	PBS, 0.09 % (W/V) sodium azide
Preservative:	Sodium azide
Precaution of Use:	This product contains sodium azide: a POISONOUS AND HAZARDOUS SUBSTANCE which should be handled by trained staff only.
Handling Advice:	Avoid repeated freezing and thawing.
Storage:	4 °C/-20 °C
Storage Comment:	Store undiluted at 2-8 °C for one month or (in aliquots) at -20 °C for longer.

Images



Flow Cytometry

Image 1. CCDC148 Antibody (Center) flow cytometric analysis of A2058 cells (right histogram) compared to a negative control cell (left histogram). FITC-conjugated goat-anti-rabbit secondary antibodies were used for the analysis.



Western Blotting

Image 2. CCDC148 Antibody (Center) western blot analysis in A2058 cell line lysates (35µg/lane). This demonstrates the CCDC148 antibody detected the CCDC148 protein (arrow).

Western Blotting

Image 3. CCDC148 Antibody (Center) western blot analysis in mouse heart tissue lysates (35µg/lane). This demonstrates the CCDC148 antibody detected the CCDC148 protein (arrow).