

Datasheet for ABIN951097
anti-CCDC153 antibody (N-Term)[Go to Product page](#)

3 Images

Overview

Quantity:	0.4 mL
Target:	CCDC153
Binding Specificity:	AA 39-68, N-Term
Reactivity:	Human
Host:	Rabbit
Clonality:	Polyclonal
Conjugate:	This CCDC153 antibody is un-conjugated
Application:	Western Blotting (WB), Enzyme Immunoassay (EIA)

Product Details

Immunogen:	KLH conjugated synthetic peptide between 39-68 amino acids from the N-terminal region of human CCDC153
Isotype:	Ig Fraction
Specificity:	This antibody reacts to CCDC153.
Cross-Reactivity (Details):	Species reactivity (tested):Human.
Purification:	Affinity chromatography on Protein A

Target Details

Target:	CCDC153
Alternative Name:	CCDC153 (CCDC153 Products)

Target Details

Background:	Synonyms: Coiled-coil domain-containing protein 153
Molecular Weight:	23858 Da
Gene ID:	283152
NCBI Accession:	NP_001138490

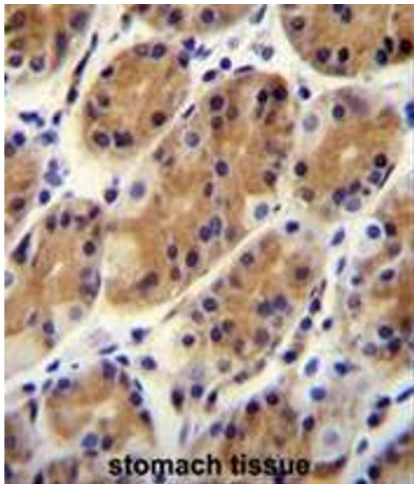
Application Details

Application Notes:	Optimal working dilution should be determined by the investigator.
Restrictions:	For Research Use only

Handling

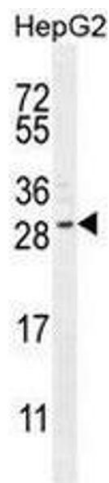
Format:	Liquid
Concentration:	0.25 mg/mL
Buffer:	PBS, 0.09 % (W/V) sodium azide
Preservative:	Sodium azide
Precaution of Use:	This product contains sodium azide: a POISONOUS AND HAZARDOUS SUBSTANCE which should be handled by trained staff only.
Handling Advice:	Avoid repeated freezing and thawing.
Storage:	4 °C/-20 °C
Storage Comment:	Store undiluted at 2-8 °C for one month or (in aliquots) at -20 °C for longer.

Images



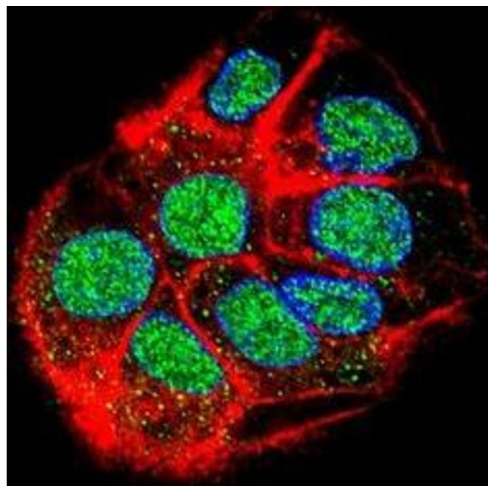
Immunohistochemistry (Paraffin-embedded Sections)

Image 1. CCDC153 Antibody (N-term) immunohistochemistry analysis in formalin fixed and paraffin embedded human stomach tissue followed by peroxidase conjugation of the secondary antibody and DAB staining. This data demonstrates the use of CCDC153 Antibody (N-term) for immunohistochemistry. Clinical relevance has not been evaluated.



Western Blotting

Image 2. CCDC153 Antibody (N-term) western blot analysis in HepG2 cell line lysates (35µg/lane). This demonstrates the CCDC153 antibody detected the CCDC153 protein (arrow).



Immunofluorescence

Image 3. Confocal immunofluorescent analysis of CCDC153 Antibody (N-term)(Cat#AP50770PU-N) with HepG2 cell followed by Alexa Fluor 488-conjugated goat anti-rabbit IgG (green). Actin filaments have been labeled with Alexa Fluor 555 phalloidin (red). DAPI was used to stain the cell nuclear (blue).